



HIGH- & LOW SPEED HANDPIECES | PROPHYLAXIS | SCALER
MOTORS | QUICK CONNECTORS | TUBINGS | SPARE PARTS | TOOLS



THE PRIME LINE SERIES

MAX. 55dB(A): QUIET LIKE NO OTHER!

The Prime Line spindle has a two-part bur guide with a carbide shell for the highest level of concentricity and resistance to bending. With over 40 N of retention force, the spindle guarantees that the bur is securely held. The vibration-free running results in a sound level of less than 55 dB. This makes the Prime Line quiet like no other (HP21KL).

FEATURES

- Prime Grip
- Premium spindle with carbide-Insert
- Pressure reduction system (only handpieces with KaVo Multiflex® connection)
- Titanium coating
- Ceramic bearings
- Pushbutton system
- Glass rod light conductor
- Non-return valves

HIGH SPEED HANDPIECES



HP21KL
 High Speed Handpiece with light
 Standard head
 25W
 4-hole spray
 KaVo Multiflex® connection

HP21NL
 High Speed Handpiece with light
 Standard head
 25W
 4-hole spray
 NSK Phatelus® connection



HP22KL
 High Speed Handpiece with light
 Small head
 18W
 3-hole spray
 KaVo Multiflex® connection

HP22NL
 High Speed Handpiece with light
 Small head
 18W
 3-hole spray
 NSK Phatelus® connection





THE CLASSIC LINE SERIES FEEL THE ADVANTAGE!

One result of our research is the newly designed grip for the Classic Line. The Classic Grip fits perfectly in your hand. Tangibly improved ergonomics and higher stability are the result. A high resistance to wearout and corrosion is ensured through the high quality coating of the surface.

FEATURES

- Classic Grip
- Ceramic bearings
- Premium spindle with carbide-insert
- Pushbutton system
- Chrome coating
- Glass rod light conductor

HIGH SPEED HANDPIECES WITH LIGHT



HC20KL - Power Edition
High Speed Handpiece with light
Standard head
28W
4-hole spray
KaVo Multiflex® connection

28W!



HC21KL
High Speed Handpiece with light
Standard head
23W
4-hole spray
KaVo Multiflex® connection



HC22KL
High Speed Handpiece with light
Small head
18W
3-hole spray
KaVo Multiflex® connection

HIGH SPEED HANDPIECES WITHOUT LIGHT



HC20K - Power Edition
High Speed Handpiece
Standard head
28W
4-hole spray
KaVo Multiflex® connection

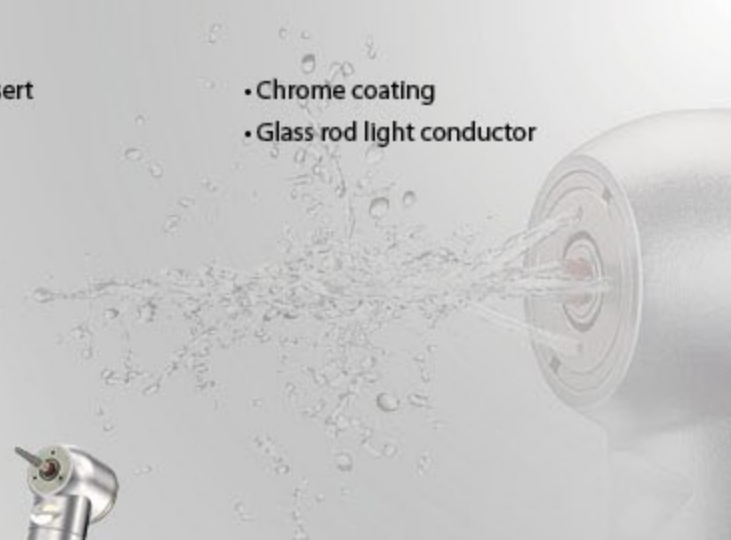
28W!



HC21K
High Speed Handpiece
Standard head
23W
4-hole spray
KaVo Multiflex® connection



HC22K
High Speed Handpiece
Small head
18W
3-hole spray
KaVo Multiflex® connection



THE ECO LINE SERIES

HIGH FLEXIBILITY, LOW PRICE!

FEATURES

- Smooth Grip
- Ceramic bearings
- Spindle with steel-insert
- Pushbutton system
- Chrome coating
- Glass rod light conductor



HIGH SPEED HANDPIECES WITH MULTIFLEX® CONNECTION



HE21KL
High Speed Handpiece with light
Standard head
21W
4-hole spray
KaVo Multiflex® connection

HE21NL
High Speed Handpiece with light
Standard head
21W
4-hole spray
NSK Phatelus/Mach® connection



HE22KL
High Speed Handpiece with light
Small head
16W
3-hole spray
KaVo Multiflex® connection

HE22NL
High Speed Handpiece with light
Small head
16W
3-hole spray
NSK Phatelus/Mach® connection



HE21K
High Speed Handpiece
Standard head
21W
4-hole spray
KaVo Multiflex® connection

HE21N
High Speed Handpiece
Standard head
21W
4-hole spray
NSK Phatelus/Mach® connection



HE22K
High Speed Handpiece
Small head
16W
3-hole spray
KaVo Multiflex® connection

HE22N
High Speed Handpiece
Small head
16W
3-hole spray
NSK Phatelus/Mach® connection

HIGH SPEED HANDPIECES WITH TUBING CONNECTION



HE11
High Speed Handpiece
Standard head
18W
1-hole spray
2-hole connection



HE12
High Speed Handpiece
Standard head
18W
1-hole spray
4-hole connection



HE14
High Speed Handpiece
Mini head
15W
1-hole spray
2-hole connection



HE15L
High Speed Handpiece with light
Standard head
18W
4-hole spray
5-hole connection



HE16L
High Speed Handpiece with light
Small head
16W
3-hole spray
5-hole connection



HE17
High Speed Handpiece
Standard head
18W
4-hole spray
4-hole connection



HE18
High Speed Handpiece
Small head
16W
3-hole spray
4-hole connection



THE BASIC LINE SERIES

PROVEN TECHNOLOGY, SAFE GRIP!

FEATURES

- Basic Grip
- Ceramic bearings
- Spindle with steel-insert
- Pushbutton system
- Chrome coating
- Glass rod light conductor



HIGH SPEED HANDPIECES WITH MULTIFLEX® CONNECTION



HB21KL
High Speed Handpiece with light
Standard head
21W
4-hole spray
KaVo Multiflex® connection



HB23KL
High Speed Handpiece with light
Mini head
15W
1-hole spray
KaVo Multiflex® connection



HB21K
High Speed Handpiece
Standard head
21W
4-hole spray
KaVo Multiflex® connection



HB23K
High Speed Handpiece
Mini head
15W
1-hole spray
KaVo Multiflex® connection

HIGH SPEED HANDPIECES WITH TUBING CONNECTION



HB12
High Speed Handpiece
Standard head
18W
1-hole spray
4-hole connection



HB14
High Speed Handpiece
Mini head
15W
1-hole spray
4-hole connection



HB15L
High Speed Handpiece with light
Standard head
18W
1-hole spray
5-hole connection



HB16L
High Speed Handpiece with light
Mini head
15W
1-hole spray
5-hole connection





THE PRIME LS LINE SERIES

PRIME GRIP: OPERATING CONVENIENCE!

The combination of a brushed stainless steel housing and a titanium coating offers a perfect grip, protection against corrosion and maximum scratch resistance.

Due to the ideal angle combination, you can reach hard to reach preparation areas for maximum comfort during treatment.

CONTRA ANGLE HEADS

FEATURES

- KaVo® compatible
- Titanium coating
- Push button



LPH11
Contra Angle Head
1:1, blue
Max. 40.000 rpm
For CA burs (Ø2.35 mm)



LPH16
Contra Angle Head
1:1, blue
Max. 40.000 rpm
For FG burs (Ø1.6 mm)



LPH21
Contra Angle Head
2:1, green
Max. 20.000 rpm
For CA burs (Ø2.35 mm)

STRAIGHT- & CONTRA ANGLE HANDPIECES

FEATURES

- Prime Grip
- With light
- Intramatic® connection
- Stainless steel case with titanium coating



LP01L
Straight Handpiece with light
1:1, blue
With internal water
Max. 40.000 rpm
For HP burs (Ø2.35 mm)



LP11L
Contra Angle Body with light
1:1, blue
With internal water
Max. 40.000 rpm
For MK-dent and KaVo® heads



LP27L
Contra Angle Body with light
2,7:1, green
With internal water
Max. 14.814 rpm
For MK-dent and KaVo® heads



LP74L
Contra Angle Body with light
7,4:1, green
With internal water
Max. 5.406 rpm
For MK-dent and KaVo® heads



THE CLASSIC LS LINE SERIES CLASSIC GRIP: FEEL THE ADVANTAGE!

The Classic Grip fits perfectly in your hand. Tangibly improved ergonomics and higher stability are the result. A high resistance to wear and corrosion is ensured through the high quality chrome coating of the surface and the brass housing.

CONTRA ANGLE HEADS

FEATURES

- KaVo® compatible
- Chrome coating
- Push button



LCH11
Contra Angle Head
1:1, blue
Max. 40.000 rpm
For CA burs (Ø 2.35 mm)



LCH16
Contra Angle Head
1:1, blue
Max. 40.000 rpm
For FG burs (Ø 1.6 mm)



LCH21
Contra Angle Head
2:1, green
Max. 20.000 rpm
For CA burs (Ø 2.35 mm)

STRAIGHT- & CONTRA ANGLE HANDPIECES

FEATURES

- Classic Grip
- Available with or without light
- Intramatic® connection
- Chrome coating



LC01L / LC01
Straight Handpiece with / without light
1:1, blue
With internal water
Max. 40.000 rpm
For HP burs (Ø 2.35 mm)



LC11L / LC11
Contra Angle Body with / without light
1:1, blue
With internal water
Max. 40.000 rpm
For MK-dent and KaVo® heads



LC27L / LC27
Contra Angle Body with / without light
2,7:1, green
With internal water
Max. 14.814 rpm
For MK-dent and KaVo® heads



LC74L / LC74
Contra Angle Body with / without light
7,4:1, green
With internal water
Max. 5.406 rpm
For MK-dent and KaVo® heads



LE16L / LE16
 Contra Angle Handpiece with / without light
 1:1, blue
 With internal water
 Max. 40.000 rpm
 For FG burs (Ø 1.6 mm)



LE21L / LE21
 Contra Angle Handpiece with / without light
 2:1, green
 With internal water
 Max. 20.000 rpm
 For CA burs (Ø 2.35 mm)



LE27L / LE27
 Contra Angle Handpiece with / without light
 2,7:1, green
 With internal water
 Max. 14.814 rpm
 For CA burs (Ø 2.35 mm)



LE54L / LE54
 Contra Angle Handpiece with / without light
 5,4:1, green
 With internal water
 Max. 7.407 rpm
 For CA burs (Ø 2.35 mm)

THE ECO LS LINE SERIES SOLID PERFORMANCE!

The Eco Line Contra Angle Handpieces with built-in contra angle head offer high-tech precision and convincing reliability for a nice price.
 The wide spectrum of transmissions provides the right handpiece for each purpose.

STRAIGHT- & CONTRA ANGLE HANDPIECES

FEATURES

- Smooth Grip
- Available with or without light
- Intramatic® connection
- Chrome coating



LE01L / LE01
 Straight Handpiece with / without light
 1:1, blue
 With internal water
 Max. 40.000 rpm
 For HP burs (Ø 2.35 mm)



LE11L / LE11
 Contra Angle Handpiece with / without light
 1:1, blue
 With internal water
 Max. 40.000 rpm
 For CA burs (Ø 2.35 mm)



LE74L / LE74
 Contra Angle Handpiece with / without light
 7,4:1, green
 With internal water
 Max. 5.406 rpm
 For CA burs (Ø 2.35 mm)



LE148L / LE148
 Contra Angle Handpiece with / without light
 14,8:1, green
 With internal water
 Max. 2.703 rpm
 For CA burs (Ø 2.35 mm)



THE BASIC LS LINE SERIES

PROVEN TECHNOLOGY, SAFE GRIP!

The Basic Grip guarantees a safe and comfortable feeling at work – in all situations. The chrome coating is particularly resistant and easy to clean.

Also, on a selection of Basic Line straight- and contra angle handpieces, you have the choice between external water or no water supply.

STRAIGHT HANDPIECES

FEATURES

- Basic Grip
- Intramatic® connection
- Chrome coating



LB01
Straight Handpiece
1:1, blue
Max. 20.000 rpm
For HP burs (Ø 2.35 mm)
Intramatic® connection



LB02
Straight Handpiece
1:1, blue
External water via clip-on hose
Max. 20.000 rpm
For HP burs (Ø 2.35 mm) and disposable prophy heads
Intramatic® connection

CONTRA ANGLE HEADS



LBH11
Contra Angle Head
1:1, blue
Max. 20.000 rpm
Pushbutton system
For CA burs (Ø 2.35 mm)



LBH11P
Contra Angle Head
1:1, blue
Max. 5.000 rpm
For snap-on prophy cups



LBH11C
Contra Angle Head
1:1, blue
Max. 20.000 rpm
Latch type system
For CA burs (Ø 2.35 mm)

CONTRA ANGLE HANDPIECES



LB11
Contra Angle Bottom Part
1:1, blue
Max. 20.000 rpm
For MK-dent LBH11/11P/11C and
NSK® EX series heads
Intramatic® connection



LB41
Contra Angle Bottom Part
4:1, green
Max. 5.000 rpm
For MK-dent LBH11/11P/11C and
NSK® EX series heads
Intramatic® connection



LB11/11
Contra Angle Handpiece
1:1, blue
External water via clip-on hose
Max. 20.000 rpm
For CA burs (Ø 2.35 mm)
Intramatic® connection



LB11/11C
Contra Angle Handpiece
1:1, blue
External water via clip-on hose
Max. 20.000 rpm
For CA burs (Ø 2.35 mm)
Intramatic® connection



LB41/11
Contra Angle Handpiece
4:1, green
External water via clip-on hose
Max. 5.000 rpm
For CA burs (Ø 2.35 mm)
Intramatic® connection



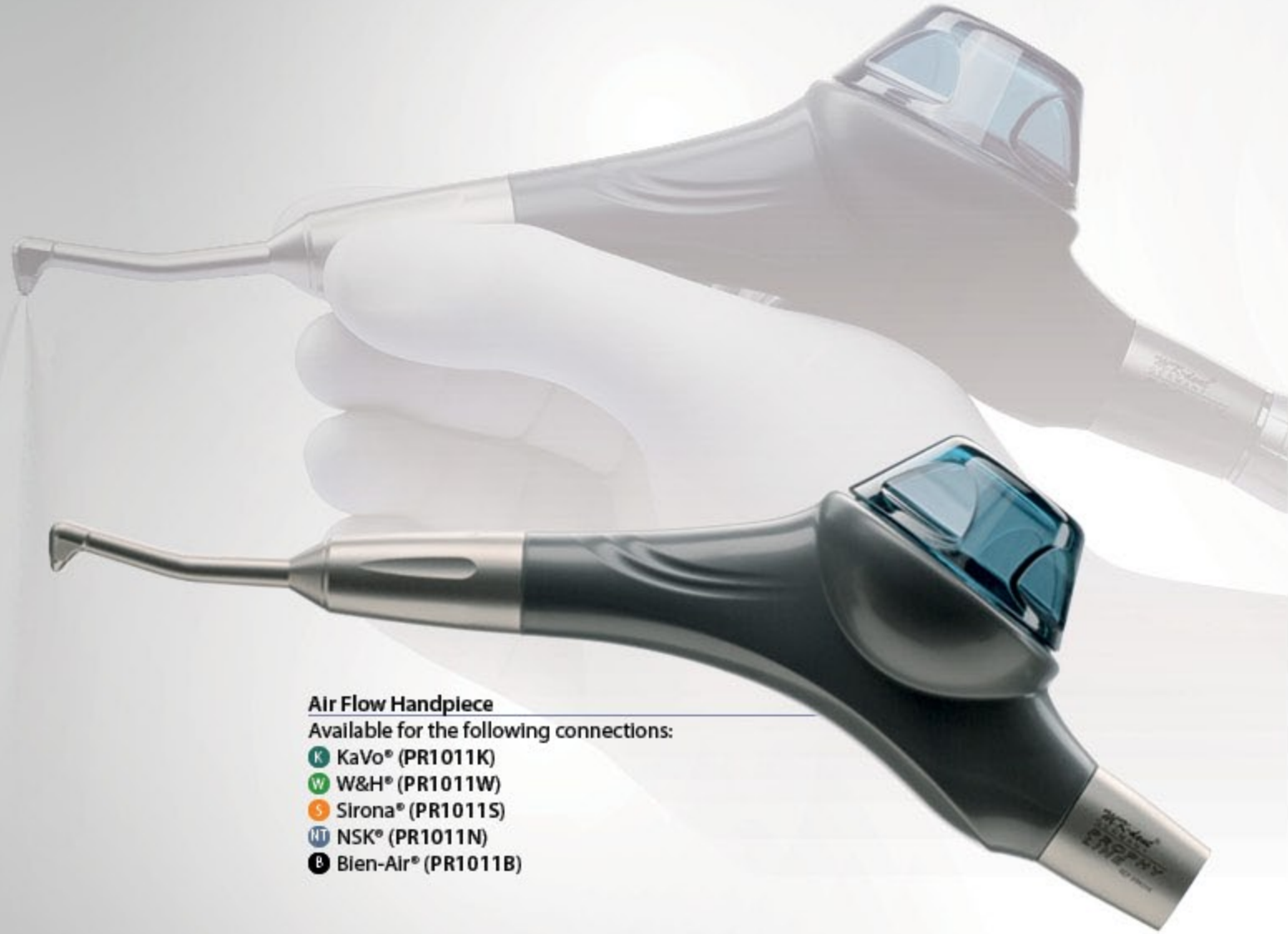
LB41/11P
Contra Angle Handpiece
4:1, green
Max. 5.000 rpm
For snap-on prophy cups
Intramatic® connection

THE PROPHY LINE SERIES

LIGHT, EFFICIENT, UNIVERSAL!

FEATURES

- Ergonomically shaped
- Light weight and compact
- 360° rotatable outer handle RotoGrip®-system for simple and fatigue proof operation



Air Flow Handpiece

Available for the following connections:

- K KaVo® (PR1011K)
- W W&H® (PR1011W)
- S Sirona® (PR1011S)
- NT NSK® (PR1011N)
- B Bien-Air® (PR1011B)



Prophylaxis Cleaning Powder

For Propphy Line and other air flow handpieces

Extra fine grain size: 12 - 14 µm

Available in the following flavors:

- Mint flavor (PP1011)
- Lemon flavor (PP1012)
- Strawberry flavor (PP1013)

ULTRASONIC SCALER

FEATURES

- Ergonomic shape for excellent grip
- Lean steel sleeve for a long durability
- Painfree treatments for the patient through linear movements of the tip
- 6-LED light ring for optimum lighting
- Available for the following connections: E EMS* SA Satelec*



SC21E
Scaler Handpiece
24 - 33 kHz
Steel funnel cover
EMS® connection, type EN-041



SC21EL
Scaler Handpiece with light
24 - 33 kHz
Steel funnel cover
EMS® connection, type EN-060A



SC21S
Scaler Handpiece
24 - 33 kHz
Steel funnel cover
Acteon/Satelec® connection,
type F 12 281



SC21SL
Scaler Handpiece with light
24 - 33 kHz
Steel funnel cover
Acteon/Satelec® connection,
type F 12 609

THE INNOVATIVE DLC COATING TECHNIQUE: DIAMOND-LIKE CARBON!



FEATURES

- High quality DLC coating
- Extreme hard and wear resistant, for an up to 40% longer lifetime
- Optimum view through a reflection-poor surface
- Anti-allergenic

Art. No. for EMS* / Satelec*	ST01E / ST01S	ST01ED / ST01SD	ST02E / ST02S	ST02ED / ST02SD
Application area	Scaling	Scaling	Scaling	Scaling
Coating/Material	Stainless steel	DLC	Stainless steel	DLC

Art. No. for EMS* / Satelec*	ST03E / ST03S	ST03ED / ST03SD	ST04E / ST04S	ST04ED / ST04SD
Application area	Scaling	Scaling	Scaling	Scaling
Coating/Material	Stainless steel	DLC	Stainless steel	DLC

Art. No. for EMS* / Satelec*	ST05E / ST05S	ST06E / ST06S	ST06ED / ST06SD	ST07E / ST07S
Application area	Endodontics	Periodontal	Periodontal	Periodontal
Coating/Material	Stainless steel	Stainless steel	DLC	Stainless steel

Art. No. for EMS* / Satelec*	ST08E / ST08S	ST08ED / ST08SD	ST09E / ST09S	ST10E / ST10S
Application area	Periodontal	Periodontal	Periodontal	Periodontal
Coating/Material	Stainless steel	DLC	Stainless steel	Stainless steel

Art. No. for EMS* / Satelec*	ST10ED / ST10SD	ST11E / ST11S	ST12E / ST12S	ST13E / ST13S
Application area	Periodontal	Periodontal	Endodontics	Endodontics
Coating/Material	DLC	Stainless steel	Stainless steel	Stainless steel

Art. No. for EMS* / Satelec*	ST14E / ST14S	ST15E / ST15S	ST16E / ST16S	ST17E / ST17S
Application area	Endodontics	Endodontics	Endodontics	Endodontics
Coating/Material	Stainless steel	Stainless steel	Stainless steel	Stainless steel

Art. No. for EMS* / Satelec*	ST18E / ST18S	ST19E / ST19S	ST20E / ST20S	ST21E / ST21S
Application area	Endodontics	Cavity preparation	Cavity preparation	Cavity preparation
Coating/Material	Stainless steel	Stainless steel	Stainless steel	Stainless steel

Art. No. for EMS* / Satelec*	ST22E / ST22S	ST23E / ST23S
Application area	Cavity preparation	Cavity preparation
Coating/Material	Stainless steel	Stainless steel



SC21KEY Torque Key for insertion and storage of scaler tips

- Combination of torque key and key holder for neat storage and sterilization of scaler tips
- No contact required during handling of the instrument - therefore no risk of injury or contamination
- A defined torque of 0,3 - 0,4 Nm prevents an overwinding of the thread
- Autoclavable at up to 135 °C

QUICK CONNECTORS FOR HIGH SPEED HANDPIECES



6-hole Quick Connector with spray regulation system
MK-dent & KaVo Multiflex® connection
Available in the following versions:
QC6016KW with LED
QC5016KW with Xenon

6-hole Quick Connector
MK-dent & KaVo Multiflex® connection
Available in the following versions:
QC6016K with LED
QC5016K with Xenon



Quick Connector
MK-dent & KaVo Multiflex® connection
Available in the following versions:
QC4014K without light (4-hole)
QC4012K without light (2-hole)

6-hole Quick Connector with spray regulation system
Sirona® connection
Available in the following versions:
QC6016SW with LED
QC5016SW with Xenon



Quick Connector
W&H Roto Quick® connection
Available in the following versions:
QC5016W with power supply (6-hole)
QC4014W without power supply (4-hole)

Quick Connector
NSK MachLite® connection
Available in the following versions:
QC6016NT with LED (6-hole)
QC5016NT with Xenon (6-hole)
QC4014NT without light (4-hole)



FOR ALL STRAIGHT & CONTRA ANGLE HANDPIECES: POWERFUL DRIVE!



FEATURES

- Electric Motor EM1190K with LED
- Max. 40.000 rpm
- Spray regulation system
- Guided interior separate coolants
- Short Intramatic® 2 connection, suitable for all common instruments
- Compatible with KaVo® 190, 196 and K200 connections

AIRMOTORS WITH INTERNAL WATER SUPPLY



FEATURES

- 4-hole Airmotor AM1004
- Max. 20.000 rpm
- Internal water supply
- Infinitely adjustable right and left drive
- Guided interior separate coolants
- Standard Intramatic® connection, suitable for all common instruments

AIRMOTORS WITH EXTERNAL WATER SUPPLY



AM0012
2-hole Airmotor with external water supply
Max. 20.000 rpm
Standard Intramatic® connection



AM0014
4-hole Airmotor with external water supply
Max. 20.000 rpm
Standard Intramatic® connection

AIRMOTORS WITHOUT WATER SUPPLY



AM0002
2-hole Airmotor without water supply
Max. 20.000 rpm
Standard Intramatic® connection



AM0004
4-hole Airmotor without water supply
Max. 20.000 rpm
Standard Intramatic® connection

SUITABLE FOR MANY UNITS: PREMIUM QUALITY SILICONE!



FEATURES

- For high speed handpieces and electric motors
- Premium quality silicone for extra long durability
- Available with separate air return tubing and 400° Swivel Connection
- Available in the following colors: A Light Grey B Medium Grey C Grey D Brown
- Available for the following brands: K KaVo® NT NSK® B Bien-Air® CH Chirana® E EMS® A Acteon®/Satelec®

HO1014	4-hole connection without light. Open end, length: 1,9 m.
HO1016	4-hole connection with light. Open end, length: 1,9 m.
HO1026	4-hole connection with light and separate return air. Open end, length: 1,9 m.
HO1031	4-hole connection with light and separate return air. Fits for KaVo® units 1057, 1060, 1062, 1063, 1065, 1080. Length 1,35 m.
HO2021	Suitable for EM1190K, KaVo® K190/196/200 and Chirana® Medical CH660 electric motors. Open end, length: 1,9 m.
HO2022	Suitable for Bien-Air® MC3 (both) and NSK® M40 electric motors and high speed handpieces. Open end, length: 1,9 m.
HO2023	Suitable for Bien-Air® MC2 ISOLITE 300 electric motors. Open end, length: 1,9 m.
HO2026	Suitable for Bien-Air® MC2 ISOLITE 300 electric motors. 400° Swivel Connection. Open end, length: 1,9 m.
HO2027	Suitable for KaVo® 700/701/702 electric motors. Open end, length: 1,9 m.
HO2031	Suitable for EM1190K, KaVo® K190/196/200 electric motors. Fits for KaVo® units 1058, 1062, 1063, 1065, 1066, 1080. Nut color: black, length: 1,35 m.
HO2032	Suitable for KaVo® K200 series electric motors. Fits for KaVo® units 1058, 1062, 1063, 1065, 1066, 1080. Nut color: grey, length: 1,35 m.
HO2033	Suitable for EM1190K and KaVo® K190/196/200 electric motors. Fits for KaVo® units 1057, 1060. Length: 1,35 m.
HO2034	Suitable for KaVo® K192/201 electric motors. With water regulation. Fits for KaVo® units 1057, 1060. Length: 1,35 m.
HO2036	Suitable for EM1190K and KaVo® K190/196/200 electric motors. 400° Swivel connection. Fits for KaVo® units 1058, 1062, 1063, 1065, 1066, 1080. Length: 1,35 m.
HO2037	Suitable for KaVo® K700 series electric motors. With water regulation and 400° Swivel connection. Fits for KaVo® units 1058, 1062, 1063, 1065, 1066, 1080. Length: 1,35 m.
HO2038	Suitable for KaVo® K700 series electric motors. With water regulation and 400° Swivel connection. Fits for KaVo® units E50, E70, E80. Length: 1,35 m.
HO2040	Suitable for KaVo® K700 series electric motors. With water regulation and 400° Swivel connection. Fits for KaVo® units 1057, 1060. Length: 1,35 m.
HO3011	Suitable for EMS® scaler. Outer diameter 7 mm, open end, length: 1,9 m.
HO3012	Suitable for EMS® scaler. Outer diameter 9 mm, open end, length: 1,9 m.
HO3021	Suitable for Acteon/Satelec® scaler. Outer diameter 7 mm, open end, length: 1,9 m.
HO3022	Suitable for Acteon/Satelec® scaler. Outer diameter 9 mm, open end, length: 1,9 m.

REPLACEMENT CARTRIDGES: BREATHTAKING PERFORMANCE!

CHOOSE BETWEEN THREE QUALITIES:

- Premium Cartridge - Carbide insert with ceramic bearings
- Standard Cartridge - Steel insert with ceramic bearings
- Basic Cartridge - Steel insert with steel bearings



Your Turbine	Suitable Premium Cartridge	Suitable Standard Cartridge	Suitable Basic Cartridge
MK-dent			
HB12	TC2021	TC1021	-
HB14	TC2033	TC1033	-
HB15L	TC2021	TC1021	-
HB16L	-	TC1033	-
HB21K/KL	TC2034	TC1034	-
HB23K/KL	TC2033	TC1033	-
HC20K/KL	TC2038	-	-
HC21K/KL	TC2038	-	-
HC22K/KL	TC2039	-	-
HE11	TC2021	TC1021	-
HE12	TC2021	TC1021	-
HE14	TC2035	TC1035	-
HE15L	TC2021	TC1021	-
HE16L	TC2035	TC1035	-
HE17	TC2034	TC1034	-
HE18	TC2035	TC1035	-
HE21K/KL/N/NL	TC2034	TC1034	-
HE22K/KL/N/NL	TC2035	TC1035	-
HP21KL/NL	TC2041	-	-
HP22KL/NL	TC2042	-	-
KaVo®			
4500B/BR	TC2500BK	TC1500BK	TS1500BK
5000B/BY	TC2500BK	TC1500BK	TS1500BK
6000B	TC2600BK	TC1600BK	TS1600BK
630B/C	TC2640BK	TC1640BK	TS1640BK
632D/E/EA	TC2642BK	TC1642BK	TS1642BK
635B	TC2635BK	TC1635BK	TS1635BK
635BR	TC2637BK	TC1635BK	TS1635BK
636CP/P	TC2636BK	TC1636BK	TS1636BK
637B/C	TC2637BK	TC1637BK	TS1637BK
639B/C	TC2642BK	TC1642BK	TS1642BK
640B/C	TC2640BK	TC1640BK	TS1640BK
642B/C	TC2642BK	TC1642BK	TS1642BK
645B/C	TC2642BK	TC1642BK	TS1642BK
646B/C	TC2642BK	TC1642BK	TS1642BK

Your Turbine	Suitable Premium Cartridge	Suitable Standard Cartridge	Suitable Basic Cartridge
KaVo®			
647B	TC2647BK	TC1647BK	TS1647BK
649B	TC2647BK	TC1647BK	TS1647BK
6500B	TC2650US	TC1650US	TS1650US
6500BR	TC2800BK	TC1800BK	TS1800BK
650B	TC2650BK	TC1650BK	TS1650BK
655B/C	TC2655BK	TC1655BK	TS1655BK
659BR	TC2655BK	TC1655BK	TS1655BK
660B/C	TC2655BK	TC1655BK	TS1655BK
7000B/C	TC2700BK	TC1700BK	TS1700BK
8000B/C/BM/BS/BN	TC2800BK	TC1800BK	TS1800BK
8700	TC2870BK	TC1870BK	TS1870BK
9000	TC2900BK	TC1900BK	TS1900BK
E675L	TC2677BK	TC1677BK	TS1677BK
E677L	TC2677BK	TC1677BK	TS1677BK
E679L	TC2680BK	TC1680BK	TS1680BK
E680L	TC2680BK	TC1680BK	TS1680BK
W&H®			
TA96	TC2012W	TC1012W	TS1012W
TA97 C LED	TC2097WT	TC1097WT	TS1097WT
TA98	TC2011W	TC1011W	TS1011W
TA98 C LED	TC2098WT	TC1098WT	TS1098WT
TK100	TC2100WK	TC1100WK	TS1100WK
TK98	TC2098WK	TC1098WK	TS1098WK
Sirona®			
T1 Control TC3	TC2011S1	TC1011S1	TS1011S1
T2/T3 Racer	TC2011S2R	TC1011S2R	TS1011S2R
NSK®			
X600	TC2600NX	TC1600NX	TS1600NX
X600L	TC2600NX	TC1600NX	TS1600NX
X700	TC2700NX	TC1700NX	TS1700NX
X700L	TC2700NX	TC1700NX	TS1700NX
Bien-Air®			
Black Pearl	TC2011BBP	TC1011BBP	TS1011BBP
Bora	TC2011BB	TC1011BB	TS1011BB
Boralina	TC2011BB	TC1011BB	TS1011BB
Prestige	TC2011BP	TC1011BP	TS1011BP
B.A. International®			
Ultimate 675	TC2011S2R	TC1011S2R	TS1011S2R
Ultimate 685	TC2011S2R	TC1011S2R	TS1011S2R
Fona®			
6080MR	TC2011S2R	TC1011S2R	TS1011S2R
8060SR	TC2011S2R	TC1011S2R	TS1011S2R

LED: ULTRA HIGH BRILLIANCE!



FEATURES

- Excellent brilliance, no glare or haloes
- 5500 K daylight color temperature
- Clear color contrast, therefore very eye-friendly
- Flexible, user-friendly and economic
- 15 times longer durability compared to other halogen and XENON illuminants
- Available for the following brands:

K KaVo* **W** W&H* **S** Sirona* **NT** NSK* **B** Bien-Air* **CA** Castellini* **ST** Star* **F** Faro* **Y** Yoshida* **M** Midwest*

BU8012	For MK-dent and KaVo* quick connectors
BU8012KM	For MK-dent AM1016 and KaVo* motors
BU8012EM	For MK-dent EM1190K
BU8012SB	For Sirona* quick connectors, SPRAYVIT L tubings and Sirosonic L scaler
BU8012SG	For Sirona* motors
BU8012BA	For Bien-Air* motors (not for rotating current)
BU8012BA/V2*	For Bien-Air* motors (not for rotating current)
BU8012BAK	For Bien-Air* quick connectors and high speed handpieces, Midwest* 6-Pin quick connectors
BU8012WH	For W&H* high speed handpieces
BU8012WH/V2*	For W&H* high speed handpieces
BU8012WLT	For W&H* airmotors LT25
BU8012WEA	For W&H* motors 40LT, 50LT and A51LT
BU8012WRA	For W&H* quick connectors RA24
BU8012WRA/V2*	For W&H* quick connectors RA24
BU8012N	For NSK* quick connectors
BU8012NT	For NSK* motors TIM40 und T1205L
BU8012NNL	For NSK* NL motors
BU8012NM	For NSK* motors M40 LED, M205LG, NBS, X205L and quick connectors KCL, SCL, PTL LED
BU8012C	For Castellini* high speed handpieces
BU8012C/V2*	For Castellini* high speed handpieces
BU8012ST	For Star* quick connectors
BU8012ST/V2*	For Star* quick connectors
BU8012F	For Faro* high speed handpieces
BU8012Y	For Yoshida* quick connectors

*V2 - LEDs with reversed polarity

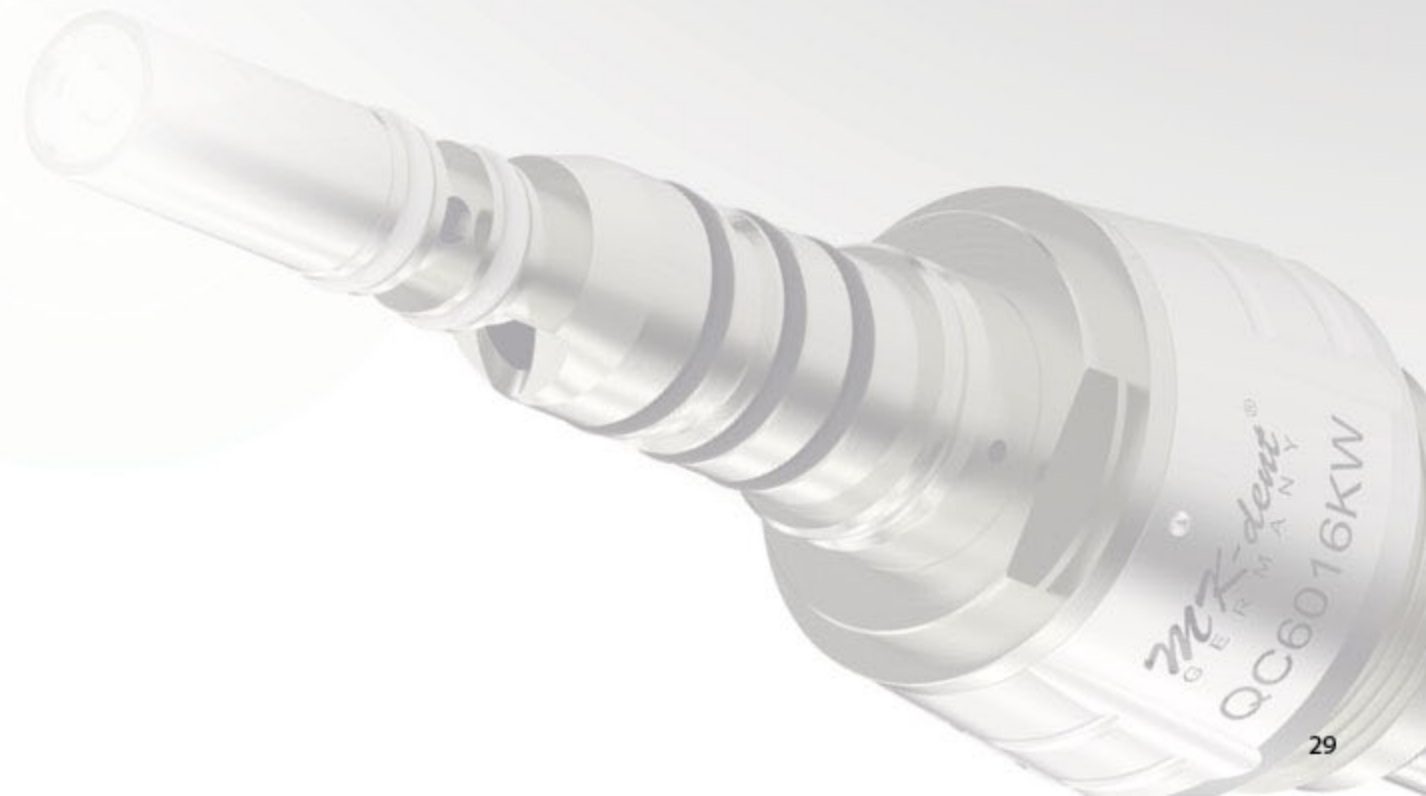
XENON: HIGH LUMINOSITY, FAVOURABLE PRICE!



FEATURES

- High luminosity
- Precise illuminance
- Long durability
- Available for the following brands: **K** KaVo* **W** W&H* **S** Sirona* **NT** NSK* **B** Bien-Air* **ST** Star*

BU7012	For MK-dent and KaVo* quick connectors and motors
BU7012SB	For Sirona* quick connectors, SPRAYVIT L tubings and Sirosonic L scaler
BU7012SG	For Sirona* motors
BU7012WH	For W&H* high speed handpieces
BU7012BA	For Bien-Air* motors
BU7012BAK	For Bien-Air* high speed handpieces
BU7012N	For NSK* quick connectors
BU7012ST	For Star* quick connectors



PREMIUM SERVICE OIL: OPTIMUM CARE!



Full synthetic Premium Service Oil, 500ml
For maintenance of high and low speed handpieces, airmotors and air flow handpieces. With mint scent.
Available in the following versions:
LU1011 suitable for a large selection of lubrication tools for many brands
LU1022 suitable for the KaVo® Quattrocare 2 system
LU1031 suitable for the W&H® Assistina and other maintenance units

ALUMINIUM LUBRICATION TOOLS

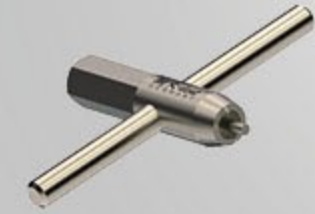
				
	LT1011	LT1012	LT1013	LT1014
Suitable for	High speed handpieces with MK-dent connection	High speed handpieces with KaVo® connection	Low speed handpieces with Intramatic® connection	FG and PB spindles, Ø 1.6 mm
				
	LT1015	LT1017	LT1018	LT1019
Suitable for	4-hole and 5-hole connections	High speed handpieces with Sirona® connection	Handpieces with W&H® connection	Handpieces with NSK® connection (CHQD)
				
	LT1020	LT1021	LT1022	
Suitable for	Handpieces with NSK® connection (TH-Max)	High speed handpieces with Star® connection	Handpieces with Yoshida® connection	

KEYS



KE1011KT Back Cap Key

Suitable for KaVo® Super Torque/Bella Torque high speed handpieces with 2-hole back caps. With attachment for torque wrench RT2025 (1,0 Nm).



KE1022KT Spray Cover Key

Suitable for MK-dent & KaVo® high speed handpieces with standard head. With attachment for torque wrench RT2025 (0,3 Nm).



KE1023T Back Cap Key

Suitable for MK-dent high speed handpieces with small head. With attachment for torque wrench RT2025 (1,0 Nm).



KE1637T Back Cap Key

Suitable for KaVo® Mira 635/Bella Torque 637 high speed handpieces. With attachment for torque wrench RT2025 (1,0 Nm).



KE1650T Back Cap Key

Suitable for MK-dent high speed handpieces with standard head and 3-/4-hole spray and KaVo® Super Torque/Gentle Force high speed handpieces. With attachment for torque wrench RT2025 (1,0 Nm).



KE1922T Spray Cover Key

Suitable for MK-dent Prime Line high speed handpieces with standard head. With attachment for torque wrench RT2025 (0,35 Nm).



KE2011BT Key

Suitable for low speed handpieces (SP2288 & SP1021). With attachment for torque wrench RT2026 (1,8 Nm).



KE2011T Back Cap Key

Suitable for low speed handpieces. With attachment for torque wrench RT2025 (1,0 Nm)

MK-dent®
GERMANY



MK-dent®
GERMANY

Eichenweg 7b
D-22941 Bargteheide, Germany

Phone: +49 (0)4532 / 400 49-0

Fax: +49 (0)4532 / 400 49-10

Email: info@mk-dent.com

Your distributor



GETZ HEALTHCARE DENTAL LIMITED
25/F, 8 Commercial Tower, 8 Sun Yip Street,
Chai Wan, Hong Kong SAR, People's Republic of China
香港柴灣新華街8號八禧商業廣場25樓
Tel: +852 2583 9193
Fax: +852 2585 9037
Email: info.dental.hk@getzhealthcare.com

www.MK-dent.com