

parkell today

Q U A R T E R L Y

2021 Q1

A Division of DirectaDentalGroup



GETZ HEALTHCARE DENTAL LIMITED

23/F, 8 Commercial Tower, 8 Sun Yip Street,
Chai Wan, Hong Kong SAR, People's Republic of China

香港柴灣喜利街8號商業大廈23樓

Tel: +852 2500 2100

Fax: +852 2500 2107

Email: info@getzdental.com

We Are Here.

For almost 75 years, from our design and manufacturing facility on Long Island, New York, we have consistently developed industry leading products to help support clinicians around the world. We never stop working to provide innovative and thoughtful solutions. We have been, and will continue to be here for you.

We are Parkell.

In This Issue

- Meet the Predicta® Bioactive Family - p4
- Free CE Credits - p3
- Hone In On Your Patient's Pain - p9
- Inserts Buyer's Guide - p24





Greetings from Parkell

David Mott,
President, Parkell, Inc.

My name is David Mott and I am the newly-appointed President of Parkell.

It has been almost 75 years since two entrepreneurs by the names of Alex Mitchell and Carl Parker put their heads together to form Parkell. Their mission statement, then, was the same as it is today: to provide dentists with the kind of innovative and unique products that result in improved patient care and consistent treatment outcomes.

Six years ago, I left the pharmaceutical world to join Parkell as the head of the legal, regulatory, and Research & Development teams. The knowledge I absorbed in these positions and as a member of Parkell's leadership team have taught me the power of true collaboration and prepared me for the new role I have today.

As a company with substantially all operations on Long Island, New York, we have gone through the pandemic with you. We have witnessed your courage first-hand as you jumped back into a world of asking patients to open their mouths, while everyone else was covering theirs. We have marveled at your devotion to your profession and your patients.

Your dedication has inspired us and our commitment to the practicing dentist has never been stronger. Our goal is to exceed your expectations and to provide you with world-class customer support and care.

To do this, we are asking for your help. Our excellent teams of chemists, engineers, customer care representatives and onsite dentists are stronger when they are in close communication with you. It is our bond with both dentists and hygienists that has kept us strong for so long.

With this in mind, we encourage you to explore our new "Let's Work Together" program (described on the next page and on our website). It is a collection of opportunities for you to become part of the Parkell team, in which you can offer input on the type of products you need and want to help your dental practices thrive.

As you will see, the opportunities available are wide-ranging and flexible in form and in time commitments. Whether in the capacity of an onsite part-time consultant, a focus group and product evaluator, a clinical writer, or a webinar presenter, it would be our honor to work with you.

Best Regards and Be Safe,

Cover photo: Michael Lewicki

TABLE OF CONTENTS

Adhesive Systems

- 15 Brush&Bond®
- 15 Brush&Bond® Universal
- 15 Ea-Z-y Primer®
- 14 MTL-V Metal Primer™

Articulating

- 8 AccuFilm® FastCheck
- 8 AccuFilm®

Cements & Desensitizers

- 14 Amalgambond® PLUS
- 14 C&B-Metabond® Quick
- 13 E.T.C.™ Easy Temporary Cement
- 5 **NEW! Predicta® Bioactive Desensitizer**
- 13 Retrieve™ DC
- 12 SEcure®

Composites

- 28 Epic®-TMPT
- 7 HyperFIL®
- 4 Predicta® Bioactive Bulk

Crown & Bridge / Accessories

- 18 Sterile Diamond Burs
- 31 Hedgehog Burs™
- 31 Mixing & Intraoral Tips

Crown & Bridge Materials

- 29 SmarTemp® X1
- 28 SNAP®

Electrosurgery

- 30 Sensimatic® 700SE

Endodontics

- 9 **NEW! Digitest® 3 Pulp Tester**



Glazes & Repair

- 15 Add&Bond™
- 15 DuraFinish™

Impression Materials

- 16 Blu-Mousse®
- 17 Cinch®
- 16 Green-Mousse®
- 17 Mach-2®

Post & Core Materials

- 6 Absolute Dentin®
- 20 C-I™ White Glass Fiber Posts
- 5 Predicta® Bioactive Core

Relines

- 10 MucoHard™
- 10 MucoSoft®

Tissue Management

- 11 Dryz®
- 11 Compression Caps

Ultrasonic Scalers

- 22 Integra™
- 23 TurboSensor®
- 21 TurboVue® Illuminated Ultrasonic Scaler

Ultrasonic & Piezo Inserts

- 24 **NEW! Inserts Buyer's Guide**
- 26 Burnett Power-Tip™
- 27 Comfort Grip™
- 27 GentleClean™
- 26 Magnetostrictive Inserts
- 27 Piezo Inserts

Be sure to follow us on social media for [specials, up-to-date product information, news & more!](#)

- [@ParkellTweets](#)
- [@parkell_inc](#)
- [@parkell](#)
- [@parkellinc](#)
- [@Parkell Inc](#)

*Visit parkell.com for Terms of Sale, Policies, Warranty information. Prices stated herein apply only to purchases made directly from Parkell and only to purchases made in 2021. Parkell also reserves the right to correct any clerical omission or error. Prices are subject to change without notice and may not be reflected in this issue.

Digital Dentistry: The Golden Age for Diagnosis and Treatment Planning

By Radi Masri, DDS, MS, PhD; Carl F. Driscoll, DMD; Se Jong Kim, DMD; William M. Wahle, DDS

Abstract:

It could be argued that nothing has influenced the art and science of dental diagnosis and treatment planning more than the innovative use of digital dental technology. Acquiring a digital replica of dentoalveolar structures accurately and non-invasively is common with several current systems. This facilitates and enhances diagnosis and treatment planning and refines treatment outcomes. Optical impressions can be obtained and articulated immediately and anatomic information can be evaluated using high-resolution 3D images. Optical scans of teeth, or diagnostic wax-ups, can be combined with 3D radiographic images using the existing teeth as natural fiducial

markers to facilitate diagnosis and treatment planning in implant dentistry. This technology can be used to produce surgical guides that do not allow for intraoperative modification of implant position. It should be fully embraced and implemented in the workflow of dental clinics. ■



To take this CE FREE:

Go to parkell.cdeworld.com between 1/1/21 – 4/15/21 and use PROMO CODE: **PK0121**

LEARNING OBJECTIVES:

After reading this article, the reader should be able to:

- ▶ Describe advantages and disadvantages of digital technology used for intraoral optical impressions.
- ▶ Understand 3D radiographic scanning technology and how it is used in diagnosis and treatment planning for endosseous implant placement.
- ▶ Recognize various resources available to learn clinical applications of digital dental technology.

Let's Work Together.

For over 70 years, Parkell has thrived as a manufacturer of devices and materials because of our eagerness to listen to the practicing dentist. After all, nobody knows what will work in a clinical situation better than you.

We are excited to announce that we are looking to expand our team of dentists and continue the tradition of soliciting practitioners for input on what you need to help your practices thrive.

Since we fully appreciate the value of your time and want you to feel comfortable with your level of involvement with Parkell, we currently have openings in three categories that can accommodate both higher and lower levels of commitment.

- **Focus Group and Product Evaluator**
- **Clinical Writer and Webinar Presenter**
- **Part-Time Consultant** (Onsite - Long Island, NY)

Interested in Joining the Parkell Team?

Please send your resume, CV or a brief summary about yourself, your education, professional career and/or practice experience, and your goals in joining one of the above-described teams to Parkell at ClinicalAffairs@Parkell.com. We look forward to hearing from you!

To learn more about these opportunities, visit www.parkell.com/team-parkell



MEET THE

Predicta[®]

BIOACTIVE | FAMILY

'Bioactive' materials release calcium, phosphate, and fluoride, which trigger the formation of a protective layer of mineral apatite, the predominant element found in both enamel and dentin.

NEW!

Predicta Desensitizer
now available in a
single syringe kit!

Predicta[®] bulk

BIOACTIVE

Universal, Dual-Cure Composite for All Your Restorative Needs

A dual-cure composite that can be used to fill any size cavity preparation, all the way up to the occlusal surface, without any need for additional layering.

- ▶ Dual-cure for unlimited depth of cure
- ▶ Fluorescence - for a more natural appearance
- ▶ Multiple viscosities and shades
- ▶ Highly radiopaque
- ▶ Indicated for Class I, II, III, IV, and V restorations
- ▶ Strong and durable to withstand occlusal forces
- ▶ Highly polishable
- ▶ Nanohybrid versatility
- ▶ Releases calcium and phosphate ions
- ▶ Releases and recharges fluoride ions

From large Class V's to four surface posterior restorations, there are no limits to what you can do with Predicta[®] Bulk.



Predicta[®] Bioactive Bulk-Fill Kits

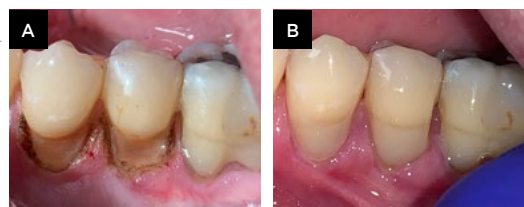
Kits include (1) 5 ml hand-held syringe and (20) 17-gauge mixing tips.

Item #	Product	Price
S615	Bulk-Fill - A1/B1 Shade	\$99.95
S616	Bulk-Fill - A2/B2 Shade	\$99.95
S610	Bulk-Fill (LV) - A1/B1 Shade	\$99.95
S611	Bulk-Fill (LV) - A2/B2 Shade	\$99.95

Not Sure Which Viscosity to Choose? See page 7

Accessories & Refills

S620	5 ml Dispensing Gun	\$89.99
S621	17-Gauge Dispensing Tips (30 pcs)	\$32.56
S622	19-Gauge Dispensing Tips (30 pcs)	\$32.56

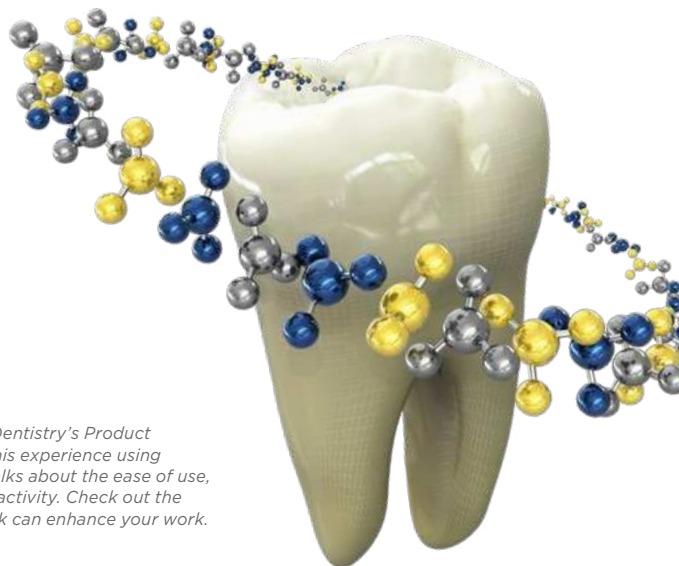


(A): Large cervical lesions #'s 20 and 21 prepped.

(B): Restored with Predicta Bulk.



In a recent episode of Inside Dentistry's Product Talk, Dr. Olitsky, DMD shares his experience using Predicta Bioactive Bulk and talks about the ease of use, aesthetics and benefits of bioactivity. Check out the video to see how Predicta Bulk can enhance your work.



Predicta® desensitizer

BIOACTIVE

Fast and Effective Relief from Dentin Hypersensitivity

NEW Predicta® Bioactive Desensitizer is changing the way clinicians treat dentin hypersensitivity by using the elements that are naturally found in the tooth, (calcium and phosphate) and restoring them to the tooth in the form of hydroxyapatite plugs that quickly block the open tubules. Then, as calcium and phosphate ions continue to release, mineralization occurs to further seal the tubules.

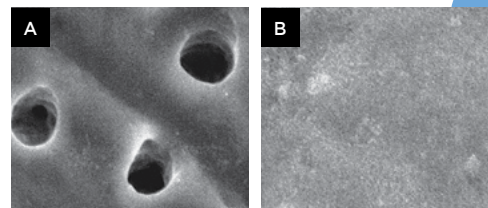
Predicta Bioactive Desensitizer is also considered highly biocompatible as there are no methacrylates or soft-tissue irritating chemicals used during production.

Treats Dentin Hypersensitivity Due to:

- Exposed roots after perio surgery
- Bleaching procedures
- Scaling or root planning
- Hypersensitivity due to gingival recession

Easy-to-Use, Easy-to-Apply!

This syringe dispensed gel requires no mixing. Simply remove any calculus or plaque from the treatment site, blot the area dry with a cotton roll or gauze and you are good-to-go.



Comparison of untreated Dentinal tubules (A), with tubules that have been covered with a dense layer of Predicta® Bioactive Desensitizer (B).¹ Image courtesy of University of Washington School of Dentistry.

Item #	Product	Price
S626	NEW! Single Syringe Predicta Bioactive Desensitizer Kit (1) 3 ml Syringe, (10) Applicator Tips and (15) Applicator Brushes.	\$44.95
S625	Predicta Bioactive Desensitizer Kit (3) 3 ml Syringes, (30) Applicator Tips and (50) Applicator Brushes.	\$125.00

Accessories & Refills

S383	Gel Applicator Tips Refill (30 tips)	\$32.56
S379	Precision Applicator Brushes Refill (200 brushes)	\$30.30

¹ Data on file.

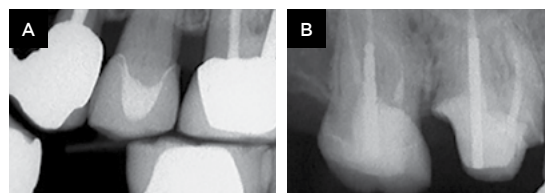
Predicta® core

BIOACTIVE

Dual-Cure Composite for Core Build-Ups and Post Cementations

Optimized for placement in teeth that require core build-ups, with or without posts, prior to the prepping, impressioning, fabrication, and cementation of a crown.

- ▶ Zirconia added to improve the prepping experience
- ▶ Indicated for core build-ups and as a post cement
- ▶ Strong and stable support for crowns made of zirconia, porcelain, PFM and metal
- ▶ Releases calcium and phosphate ions
- ▶ Releases and recharges fluoride ions
- ▶ Multiple viscosities
- ▶ Dual-cure for unlimited depth of cure



(A) Tooth #13 — A void-free Predicta Core provides strength and support for an e.max crown. (B) Tooth #3 — Post cementation and core build up accomplished with Predicta Core.

Predicta® Bioactive Core Build-Up Kits

Kits include (1) 5 ml hand-held syringe, (10) 17-gauge mixing tips and (10) 19-gauge mixing tips.

Item #	Product	Price
S600	Flowable - White Shade	\$69.95
S601	Flowable - Tooth Shade	\$69.95
S605	Stackable - White Shade	\$69.95
S606	Stackable - Tooth Shade	\$69.95

Not Sure Which Viscosity to Choose? See page 7

Accessories & Refills

S620	5 ml Dispensing Gun	\$89.99
S621	17-Gauge Dispensing Tips (30 pcs)	\$32.56
S622	19-Gauge Dispensing Tips (30 pcs)	\$32.56





High-Strength Core Composite That Stacks and Preps Like Dentin

- ▶ Radiopaque.
- ▶ Densely filled (75%) with fluoride/barium glass.
- ▶ Strong, stable support for restorations — 172 MPa flexural strength.
- ▶ Dual-cure: Self cures in 4 minutes or light cures in 40 seconds.
- ▶ Automix for quick dispensing.
- ▶ Cures to a Barcol hardness of 72 — the typical hardness of dentin.

Today's metal-free esthetic crowns demand a stiff supporting core. That's why when it comes to a core build-up material you want the best—the ABSOLUTE BEST. High-strength Absolute Dentin® stays where you place it and preps like dentin once cured. Plus, it's versatile. Not only can it be used to build-up material in the core of a broken down tooth, but also as a cement for endodontic posts.

Durability

When it comes to a composite material, the smallest amount of flex can cause a fragile ceramic crown to craze or fracture. That's why we created Absolute Dentin to cure to a Barcol hardness of 72, the typical hardness of dentin (hence the name). This core composite material displays a 172 MPa flexural strength for strong, stable cores that last and resist flexing. This high level of durability also helps to reduce the chance that your bur will ditch when it goes from core to tooth and back again while finishing.



50 ml Kits & Accessories

Item #	Product Details	Price
S300	Absolute Dentin® 50 ml Cartridge Kit - Arctic White Shade (1) 50 ml split cartridge (110 gm total), mixing tips and intraoral tips.	\$198.61
S301	Absolute Dentin® 50 ml Cartridge Kit - Tooth Shade (1) 50 ml split cartridge (110 gm total), mixing tips and intraoral tips.	\$198.61
S307	Absolute Dentin® 50 ml Cartridge Kit - Blue Shade (1) 50 ml split cartridge (110 gm total), mixing tips and intraoral tips.	\$198.61
S343	50 ml Split Cartridge Dispensing Gun	\$89.99
S302	50 ml Mixing Tip Mixing Tip - Yellow (30)	\$32.56
S303	50 ml Intraoral Tip - Yellow (50) Use w/ Mixing Tip S302	\$35.71
S308	50 ml Intraoral Tip - dark grey (30) Use w/ Mixing Tip S302	\$35.71



10 ml Kits & Accessories

Item #	Product Details	Price
S304	Absolute Dentin® 10 ml Cartridge Kit - Arctic White Shade (2) 10 ml cartridges (20 ml-44 gm total), static mixing tips and intraoral tips.	\$92.68
S305	Absolute Dentin® 10 ml Cartridge Kit - Tooth Shade (2) 10 ml cartridges (20 ml-44 gm total), static mixing tips and intraoral tips.	\$92.68
S327	10 ml Syringe Cartridge Dispensing Gun	\$89.99
S334	10 ml Mixing Tip - Brown Base Long (30)	\$32.56
S328	10 ml Mixing Tip - Brown Base Short (30)	\$32.56
S335	White Intraoral Tip - Root Canal (50) Use with Mixing Tip S328 / S334	\$35.71
S329	White Intraoral Tip (50) Use with Mixing Tip S328 / S334	\$35.71



How to Choose the Right Viscosity

Parkell offers a variety of viscosity options to best fit your procedures and preferences.



Predicta[®] bulk BIOACTIVE

Regular Viscosity (High Viscosity):

Ideally suited for clinical situations when placing larger restorations, where stability is desirable and material drift is not.

LV (Low Viscosity):

Recommended for more conservative preps, where the ability to flow and self-level into tighter spaces is preferred for better adaptation of hard-to-access prep margins and line angles.

Both Regular and LV Predicta Bulk versions are appropriate for, and can be used in all restorative situations. These guideline should be considered an aid when choosing a bulk-fill restorative that more closely matches your restorative needs and preferences.

Predicta[®] core BIOACTIVE

Stackable (High Viscosity):

Ideally suited to minimize crown prepping time, when placing larger core build-ups where stackability results in a more centralized core, and less excess in areas that would require removal during prepping.

Flowable (Low Viscosity):

Recommended for cases where post cementation and core build-ups are done together. The lower viscosity promotes better canal adaptation and less hydrostatic resistance during seating of the post into the canal.

Both Stackable and Flowable Predicta Core versions are appropriate for, and can be used in all core build-up and post cementation situations. These guideline should be considered an aid when choosing which build-up material more closely matches your needs and preferences.

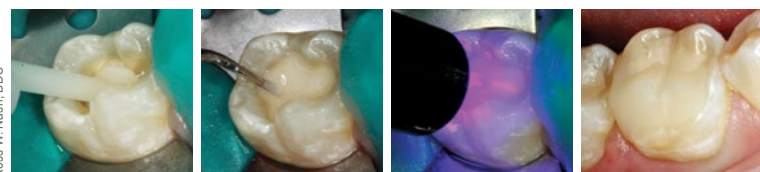
HYPERFIL[®]

Dual-Cure Bulk-Fill Composite

A True & Trusted Bulk-Fill Composite



- Dual-Cure — no need for incremental layering and curing.
- Nanofilled for durability and optimized polishability.
- Moderate viscosity — flows slightly to conform to cavity preparation.
- Excellent esthetics & shade stability.
- Radiopaque.

If you've been using a light-cure only bulk-fill you have lived with the limitation of only being able to cure up to a maximum depth of 4 mm at a time. But what do you do if the proximal box extends 9, 10, 11 mm in depth? That's where HyperFIL[®] shines. As one of the original dual-cure bulk-fills, HyperFIL has been restoring these large lesions with a single placement technique for close to a decade. True single placement bulk-filling saves time and will cure even in the deepest recesses and undercuts of a prep where even the most judicious clinician can't be sure the light is reaching.



Ross W. Nash, DDS



Item #	Product	Price
S326	 HyperFIL[®] Universal Shade A2/B2 Includes (1) 10 ml syringe, mixing tips and intraoral tips. Dispensing gun required/not included.	\$87.09
S323	 HyperFIL[®] Enamel Shade A1/B1 Includes (1) 10 ml syringe, mixing tips and intraoral tips. Dispensing gun required/not included.	\$87.09
S327	10 ml Syringe Cartridge Dispensing Gun	\$89.99
S334	10 ml Mixing Tip - Brown Base Long (30)	\$31.92
S328	10 ml Mixing Tip - Brown Base Short (30)	\$31.92
S335	White Intraoral Tip - Root Canal (50) Use with Mixing Tip S328 / S334	\$35.01
S329	White Intraoral Tip (50) Use with Mixing Tip S328 / S334	\$35.01



AccuFilm® FASTCHECK

Occlusal Articulating Film

Articulation. Simplified.

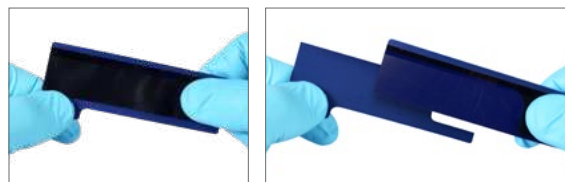
- ▶ Built-in holders eliminate the need for forceps.
- ▶ Consistently produces sharp, easy-to-interpret marks.
- ▶ Simultaneous marking of both arches with its double-sided film.
- ▶ Easily identify high contacts making for easier adjustments.
- ▶ Incredibly thin film for accurate exposure of high occlusal contacts.
- ▶ Works for a single-tooth or entire quadrant.
- ▶ For use on wet or dry surfaces.




AccuFilm®, the world-renown brand recognized for accurately marking occlusion for decades introduces its simplest film to date; AccuFilm® FastCheck. New AccuFilm FastCheck incorporates the accuracy that dental professionals have come to rely on with the convenience of built-in handles.



Film strip easily detaches from protective backing by using the convenient handles and gently pulling in opposite directions.



Item #	Product	Price
S054	 AccuFilm® FastCheck Double-Sided Marking Film — Blue/Blue (100) strips.	\$24.95



19 microns


The film thickness of AccuFilm Fastcheck, single and double-sided film is 19 MICRONS.

Additional Options Available

AccuFilm Booklets






Item #	Product	Price
S050	 AccuFilm® Arch Double-Sided Marking Paper Booklet—Red/Blue (6) booklets (12 sheets/booklet, 72 sheets ttl.).	\$25.45
S053	 AccuFilm® Double-Sided Marking Film Booklet—Red/Black (5) booklets (50 sheets/booklet, 250 sheets ttl.).	\$25.45

AccuFilm IV Brush-On Liquid

Item #	Product	Price
S020	 AccuFilm® IV Brush-On Marking Liquid (1) bottle of brush-on marking liquid and (1) bottle of solvent. Made in Germany.	\$59.11



AccuFilm Canisters

Item #	Product	Price
S017	 AccuFilm® Double-Sided Marking Film—Red/Black (1) canister of 280 pre-cut strips.	\$25.45
S018	 AccuFilm® Double-Sided Marking Film—Black/Black (1) canister of 280 pre-cut strips.	\$25.45
S021	 AccuFilm® Double-Sided Marking Film—Red/Red (1) canister of 280 pre-cut strips.	\$25.45
S014	 AccuFilm® Single-Sided Marking Film—Black (1) canister of 280 pre-cut strips.	\$19.82
S015	 AccuFilm® Single-Sided Marking Film—Red (1) canister of 280 pre-cut strips.	\$19.82

Single and double-sided film thickness is 19 microns.





NEW!

DIGITEST[®] 3

Digital Pulp Vitality Tester

Hone in on the Source of Your Patient's Pain

- ▶ Single tooth testing.
- ▶ Intuitive single button operation.
- ▶ Multiple test settings to accommodate your personal preference.
- ▶ Self-calibrating for quick easy setup.
- ▶ Ergonomic design.
- ▶ Four autoclavable probes (included) promote easy access to all tooth surfaces.
- ▶ Standard 9V battery enables simple in-office replacement.

Stimulus Adjustment / Control Button

Digital Display

Ergonomic design



Elevate Your Diagnostic Skills to the Next Level

When percussion, ice, heat and radiographs are not enough, electric stimulation may be the diagnostic tool you need for determining the cause of the patient's discomfort. That's where the Digitest[®] 3 comes in.

How it Works

The Digitest[®] 3 electrically stimulates the tooth to test for vitality. Comparing the response to the stimulus of the suspected tooth with a known healthy tooth's response to an identical stimulus can help you hone in on the source of the patient's pain.

With the ability to offer the additional diagnostic test of electric stimulation using the Digitest3, dentists worldwide are routinely diagnosing and treating problematic teeth that otherwise might have to forgo treatment until a later date, when the problem more clearly presents itself.

Item #	Product	Price
D655	Digitest[®] 3 Pulp Vitality Tester (4) autoclavable probe tips; 1-standard long, 1-standard short, 1-labial and 1-lingual, Ground Wire & Clip and a 9-Volt Battery.	\$499.99
D636	Precision Probe Set for Pulp Testers (2) precision probes; one labial & one lingual.	\$52.64
D625	Metal Probes for Pulp Tester (2) probes; one short & one long.	\$35.71
D631GC	Pulp Tester Ground Clip & Lead Wire (2) clips and (1) lead wire.	\$47.49

MucoHard™

For Durable, Convenient Chairside Hard Relines.

- ▶ Super-fast and easy to use.
- ▶ Eliminates powder/liquid mixing.
- ▶ Non-runny, thixotropic consistency.
- ▶ Auto-polymerizing resin formula sets without a curing light.
- ▶ Ideal for small jobs like attachment pickups as well as full relines.
- ▶ Pink polymer blends beautifully with most denture base shades.



Item #	Product	Price
S487	MucoHard™ Hard Denture Reline Kit (1) 50 ml cartridge of MucoHard auto-polymerizing resin, (1) 15 ml MucoHard bonding liner, mixing tips, brushes and pipettes.	\$82.84
S485	MucoHard™ Bonding Liner (1) 15 ml bottle, 6 brushes and 6 pipettes.	\$31.84

Item #	Product	Price
S486	MucoHard™ Reline Resin (1) 50 ml cartridge and mixing tips.	\$56.78
S343	50 ml Split Cartridge Dispensing Gun	\$89.99
S496	Mixing Tip Refill - Blue-Green Base (30)	\$32.56

MucoSoft®

For Comfortable, Long-Lasting Chairside Soft Relines.

- ▶ Creates instant comfort for the patient.
- ▶ Non-runny, thixotropic consistency.
- ▶ Quick and easy soft silicone relines with no heat or bad taste.
- ▶ Translucent pink color blends beautifully with most denture base shades.
- ▶ Hydrophobic formula reduces water absorption, discoloration, odor or stiffening with age.
- ▶ Special primer tenaciously grafts durable silicone to the denture base, to resist peeling, leaking and tearing.



Item #	Product	Price
S491S	MucoSoft® Silicone Reline Kit (1) 50 ml cartridge of MucoSoft Reline Silicone, (1) 15 ml bottle of MucoSoft Bonding Liner Adhesive, 12 ml Glaze (2 components A&B), mixing tips, brushes & pipettes.	\$189.40
S492S	MucoSoft® Resilient Reline Silicone (1) 50 ml cartridge and mixing tips.	\$120.53
S493	MucoSoft® A & B Glaze Refill (1) 6 ml bottle 'A', (1) 6 ml bottle 'B' (12 ml ttl.)	\$45.25

Item #	Product	Price
S494	MucoSoft® Bonding Liner Adhesive Refill (1) 15 ml bottle.	\$59.94
S343	50 ml Split Cartridge Dispensing Gun	\$89.99
S496	Mixing Tip Refill - Blue-Green Base (30)	\$32.56



Create a **Dry** Working Environment Every Time

- ▶ Quickly stops gingival bleeding and crevicular fluid seepage.
- ▶ Optimized for tissue management when taking impressions, restoring teeth with subgingival decay, seating restorations, placing rubber dam clamps (controlling bleeding) and bleaching teeth (to manage moisture).
- ▶ Available in two easily detectable contrasting colors.
- ▶ Simple and complete removal with an air/water syringe.
- ▶ Leaves no residue so impression or restorative materials handle and work as expected.
- ▶ Available in syringes and single dose capsules.

DryZ soft-tissue management paste controls bleeding and crevicular fluid seepage that often interferes with impression taking, the placement of sub-gingival restorations, the seating of lab fabricated permanent restorations, placement of a rubber dam and isolation of teeth prior to bleaching.

Versatility

DryZ is compatible with the most popular retraction techniques which include, Compression Caps, Retraction Cord, Electrosurgery and Lasers. This allows you use DryZ on its own, or include it to your current method and reduce the overall time needed to obtain retraction and hemostasis.

Speed

From placement to rinsing away, the entire DryZ process takes around two

minutes. That's less time than it takes some doctors to pack cord around a single tooth.

Now You See It...

To contrast with the surrounding tissue, DryZ is available in two easily detectable colors, Green and a vibrant aqua Blu (Blue). This lets you decide what works best for you. The only difference between the two, other than the color, is the Blu material is slightly firmer so it is better suited for displacing tissue when it is pressed subgingivally with a compression cap or a cotton roll.

Now You Don't

DryZ easily rinses off the treatment site with a few blasts from the air/water syringe. Once visibly gone, no residue remains and you can proceed to the next step in the treatment process.



Michael Karler DDS



Item #	Product	Price
S186	DryZ® Blu Intro Kit (30) unit dose capsules (0.24g/capsule), Dispensing Gun	\$135.26
S187	DryZ® Blu Unit Dose Capsules (30) unit dose capsules (0.24g/capsule)	\$103.88
S190	DryZ® Blu Syringes - (7) 0.5 ml (0.85g) syringes, (15) applicator tips	\$80.07
S191	DryZ® Blu Syringes Value Pack (25) 0.5 ml (0.85g) syringes, (55) applicator tips	\$243.47
S183	DryZ® Green Unit Dose Capsules (30) unit dose capsules (0.24g/capsule)	\$96.46
S180	DryZ® Green Syringes - (7) 0.5 ml (0.85g) syringes, (15) applicator tips	\$74.17
S182	DryZ® Green Syringes Value Pack (25) 0.5 ml (0.85g) syringes, (55) applicator tips	\$226.26
S181	DryZ® Luer Lock Applicator Tips (40)	\$35.11



Parkell Compression Caps The Perfect Assist for Perfect Impressions

- ▶ Made from pure, naturally-absorbent cotton specially-starched to maintain shape.
- ▶ Atraumatically reflect the gingival cuff away from margins and create a dry, open sulcus.
- ▶ Inhibit the flow of crevicular fluids which may interfere with accurate impressioning.
- ▶ Are available in Anatomic and Non-Anatomic styles and 3 sizes; Anterior, Premolar and Molar.

Item #	Product	Price
S195A	Compression Caps Assortment / Anatomic (120 - 3 sizes, 40 of ea.)	\$47.61
S196A	Compression Caps Assortment / Non-Anatomic (150 - 3 sizes, 50 of ea.)	\$44.37

SEcure®

4-META Adhesive Resin Cement System

Delivers Outstanding Bond Strength and Advanced Sealing Properties



- ▶ 4-META chemistry.
- ▶ Seals and protects the tooth from marginal leakage.
- ▶ Dual-cure will cure in areas where a curing light can't reach.
- ▶ Virtually no post-op sensitivity.
- ▶ No separate etching when using SEcure Self-Etch Primer or Brush&Bond®.

SEcure® is one of the most effective resin cement systems available today, providing stronger, more reliable bonds to cut enamel and dentin than other leading brands. How? By way of its penetration enhancing molecule—4-META that is found in Brush&Bond and the SEcure Primer. This unique monomer quickly and efficiently permeates cut enamel and dentin to form a hybrid layer between the tooth and adhesive resin. SEcure's biocompatibility not only creates a dependable bond between prosthesis and tooth surface, it also occludes tubules to guard against external stimuli, bacteria and other sensitivity-causing agents. It virtually shuts down microleakage for stain-free margins.



SEcure virtually shuts down microleakage, allowing for stain-free margins.



Item #	Product	Price
S270	SEcure® 4-META Adhesive Resin Cement System (1) 3 ml bottle of Self-Etch Primer, (1) 9 g syringe of Translucent Shade Resin Cement, brushes, mixing tips and a mixing well.	\$237.17
S271	SEcure® Self-Etch Primer (1) 3 ml bottle.	\$88.14
S272	 SEcure® Dual-Cure Resin Cement — Translucent Shade (1) 9 g syringe, (10) mixing tips.	\$152.09
S273	 SEcure® Dual-Cure Resin Cement — White Opaque Shade (1) 9 g syringe, (10) mixing tips.	\$152.09
S274	 SEcure® Dual-Cure Resin Cement — Dentin Shade (1) 9 g syringe, (10) mixing tips.	\$152.09
S275	Mixing Tip - Brown Base Refill (30)	\$32.56

FAQs

Q: Can I use the SEcure Primer as a bonding agent for other composites?

No. The Primer is specifically designed to work only with the SEcure resin cement. There is no reactivity between any other composite and the SEcure Primer.

Q: How can I tell the difference between SEcure's 4:1 syringe mixing tip and my previous cement's 1:1 syringe mixing tip?

Since both the 4:1 and 1:1 tips have a brown hub it can be easy to mix them up. The 4:1 mixing tips that are required for successful dispensing of SEcure are slightly longer, and have an orange mixing mechanism within the clear component of the tip.

Q: Which works better with the SEcure Resin Cement, the Self-Etching Primer, or Brush&Bond?

Brush&Bond and the SEcure Self-Etching Primer are equal in their ability to:

1. Increase the early bond strength between the tooth and the SEcure resin cement.
2. Desensitize and seal the prep.

Q: Should the Primer be light cured prior to final seating of the crown?

No. The Primer should not be light cured.

Q: Which component contains 4-META, the Self-Etching Primer, or the Resin Cement?

The 4-META is in the Self-Etching Primer.



RETRIEVE™ DC

Dual-Cure Resin-Based Implant Cement

The Most Radiopaque Implant Cement on the Market!

- ▶ Strong adhesion to metal, zirconia, and ceramic abutments and prosthesis.
- ▶ Radiopacity: 300% aluminum
- ▶ Dual-Cure

Because of its high radiopacity, Retrieve™ DC helps to reduce the possibility of implant failure due to peri-implantitis. With less radiopaque cements the excess cement that extrudes subgingivally during restoration seating is often not removed because the clinician isn't aware it is there. Now, with Retrieve's 300% times aluminum radiopacity a post insertion x-ray can help to locate this excess flash.

Dual-Cure Capability

Light curing	20 Seconds
Working Time	2 Minutes
Gel Stage for Easy Clean-up	2-3 Minutes
Self-Cure Setting Time	5 Minutes

Item #	Product	Price
S251	Retrieve™ DC Implant Cement Kit (1) 5 ml dual-chamber cartridge, (10) mixing tips.	\$75.69

E.T.C.™

EASY TEMPORARY
CEMENT

- ▶ Strong adhesion to temporary prostheses.
- ▶ Automix syringe and dual-cure capabilities reduce chairside time.
- ▶ Low viscosity allows complete seating of temporaries.
- ▶ Translucent shade blends well with crown and tooth margins.
- ▶ Eugenol-free.

Item #	Product	Price
S255	E.T.C.™ Easy Temporary Cement (1) 5 ml automix syringe, (10) mixing tips.	\$51.99



AMALGAMBOND® + PLUS

Self-Curing Dental Bonding Agent



Since It Also Bonds to Composite, Why Do We Still Call it AMALGAMBond?

- ▶ Adheres to composites, alloys and ceramics.
- ▶ Zero post-op sensitivity.
- ▶ No varnish or liners needed.
- ▶ Strong, self-cure bonds without the need for a curing light.

Since the introduction of Amalgambond, restorative materials have evolved from the unsightly amalgam to the esthetic resins. Amalgambond has been able to “stick” around because of its unmatched capacity to adhere to so many different substrates. With its ability to cure without a light (self-cure), desensitize, and set in the presence of small amounts of moisture, doctors who have been using Amalgambond for decades appreciate its versatility and effectiveness. Now you can too!

Item #	Product	Price
S370	Amalgambond® Plus Complete Kit Universal Dentin Activator Gel, “AA” Adhesive Agent, “B” Base, “C” Universal TBB Catalyst, Amalgambond High Performance Additive (HPA Powder), plus accessories.	\$294.71
S372	“B” Base (5 ml)	\$60.01
S371	“C” Universal TBB Catalyst (0.7 ml)	\$219.65
S394	Universal Dentin Activator Gel (5 ml)	\$28.75

Item #	Product	Price
S393	Universal Dentin Activator Liquid (6 ml)	\$22.89
S374	“AA” (Adhesive Agent) Primer (8 ml)	\$7.72
S376	High-Performance Additive (HPA powder) For large, multi-surface restorations (2 gms)	\$30.84
S379	Adjustable Precision Applicators (200)	\$30.30
S377	Disposable Brush Tips (100)	\$14.29

C&B-METABOND® *Quick!*

Adhesive Luting Cement

Recommended Uses:

- ▶ Cement crowns on short or overly tapered abutments.
- ▶ Place direct pulp-caps, repair root perforations in “hopeless cases”.
- ▶ Re-cement bridges or posts that repeatedly loosen due to compromised retention or patient habits.
- ▶ Perform chairside repairs such as mending broken abutments, repairing porcelain fractures, splinting periodontally-compromised teeth, adding teeth to removable prostheses, or bonding directly to composite or acrylic-based prostheses.



Item #	Product	Price
S380	C&B Metabond® Quick! Adhesive Cement System (1) 6 ml Liquid Dentin Activator, (1) 5 ml Enamel Gel Etchant, (1) 10 ml Quick! Base and Catalyst, (1) 5 ml Universal Gel Dentin Activator, (1) Shade L and (1) Clear L Radiopaque powders, and a Ceramic mixing dish with temperature strip.	\$465.60
S371	“C” Universal TBB Catalyst (0.7 ml)	\$219.65
S398	“B” Quick Base for C&B-Metabond® (10 ml)	\$90.33
S395	Enamel Etchant Gel for C&B-Metabond® (5 ml)	\$28.47
S396	Radiopaque L-Powder for C&B-Metabond® (5 gm)	\$55.58

Item #	Product	Price
S399	Clear L-Powder for C&B-Metabond® (3 gm)	\$40.43
S394	Universal Dentin Activator Gel / “A” Activator (5 ml)	\$28.75
S393	Universal Dentin Activator Liquid (6 ml)	\$22.89
S387	Ceramic Mixing Dish w/Temperature Strip	\$48.63
S379	Adjustable Precision Applicators (200)	\$30.30
S377	Disposable Brush Tips (100)	\$14.29
S413	MTL-V Metal Primer™ , (3 ml) For priming noble and precious alloys without tin plating	\$77.65

Brush&Bond®

4-META Dentin/Enamel Composite Bonding System

Brush&Bond® creates a complex Hybrid Network that enhances the bond to dentin and fully seals the sensitive tubules.



- ▶ Low film thickness of 5 microns.
- ▶ Cures with all currently available curing lights.
- ▶ Permanently seals the tubules to prevent sensitivity.
- ▶ Compatible with light-cure, self-cure and dual-cure composite.
- ▶ Creates an acid and wear-resistant shield for the tooth.
- ▶ Doubles the surface hardness of the preparation.
- ▶ Protects the pulp against microleakage and bacterial invasion.
- ▶ Bonds direct and indirect composite restorations to all tooth surfaces.

Item #	Product	Price
S284	Original Brush&Bond® 4-META Dentin/Enamel Composite Bonding System w/ Standard Brushes (1) 3 ml bottle of Brush&Bond Liquid (S285) (etch/prime/bond), and (100) Standard Activator Brushes.	\$162.86
S288	Original Brush&Bond® 4-META Dentin/Enamel Composite Bonding System w/ Mini/Endo B&B Activator Brushes (1) 3 ml bottle of Brush&Bond Liquid (S285) (etch/prime/bond), and (100) Mini/Endo B&B Activator Brushes.	\$162.86
S285	Original Brush&Bond® Bonding Liquid (1) 3 ml bottle.	\$94.96
S286	Brush&Bond® Standard Activator Brushes Refill (100)	\$77.99
S287	Brush&Bond® Mini/Endo B&B Activator Brushes Refill (100)	\$77.99

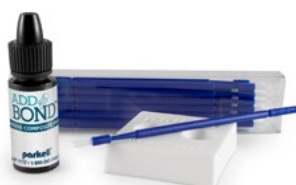
Item #	Product	Price
S240	Brush&Bond® Universal 4-META Universal Bonding System (1) 3 ml bottle of Brush&Bond Universal Liquid (S242) (etch/prime/bond), (2) 5 ml bottles of Ea-Z-y Primer ("A" and "B" - S388) and (100) Standard Activator Brushes.	\$251.38
S242	Brush&Bond® Universal Bonding Liquid (1) 3 ml bottle.	\$113.61
S388	Ea-Z-y Primer® Ceramic Priming Agent (2) 5 ml bottles (A & B).	\$105.79

Brush&Bond® Mini/Endo B&B Activator Brushes (top) feature a thinner, longer head than the standard brushes (bottom).



ADD & BOND™

Adhesive Composite Primer



- ▶ Quick repair of fractured composite.
- ▶ Improves the adhesion of resin or fiberglass posts.
- ▶ Repair or re-marginate a bis-acrylic temporary.
- ▶ Provides a thin, flexible yet strong layer between existing and new composite.

Item #	Product	Price
S260	Add&Bond™ Adhesive Composite Primer (1) 5 ml bottle of adhesive primer, disposable brushes and a mixing dish.	\$87.14

ALL-CURE DuraFINISH™

Composite Glaze



- ▶ Provides a dazzling, stain-resistant surface for all temporaries and composite restorations.
- ▶ All-Cure polymerizes with ANY light—LED, halogen, PAC or laser.
- ▶ Resists surface abrasion significantly better than traditional glazes.
- ▶ Requires no polishing.
- ▶ Nanofilled for long-lasting, superior durability.

Item #	Product	Price
S296	DuraFinish™ All-Cure Composite Glaze Kit (1) 5 ml adhesive glaze, brushes and mixing well.	\$81.52
S295	Original DuraFinish™ Composite Glaze Kit - *HALOGEN LIGHT-CURE ONLY (1) 5 ml adhesive glaze, brushes and mixing well.	\$81.52



Blu-Mousse®

VPS Bite Registration Material

For over 20 years, Blu-Mousse, has been the bite registration material of choice for discerning dental clinicians worldwide. These astute dentists appreciate the ability of Blu-Mousse to precisely capture the interocclusal relationship, which enables labs to deliver crowns that often need minimal or no occlusal adjustment.

How does Blu-Mousse deliver such accurate, reproducible bites?

- ▶ Stays stacked on the occlusal surface during placement.
- ▶ Light and fluffy consistency allows the patient to passively close without resistance into maximum intercuspation (centric occlusion).
- ▶ Hardens to a plaster-like final set with a durometer of 90 to ensure precise articulations. (Use of lower durometer materials can lead to articulation errors due to elastic compression and rebound.)
- ▶ Does not distort between the time the bite is taken and when the lab articulates the models.
- ▶ Resists breakage on removal from the mouth, during trimming of excess flash and when used to position models during articulation.

Blu-Mousse is offered in three set-times to accommodate your clinical needs and preferences:

- ▶ 30 seconds
- ▶ 60 seconds
- ▶ 2 minutes

Blu-Mousse is a Vinyl Polysiloxane (VPS) material. Additional Clinical Applications:

- ▶ Scannable
- ▶ A matrix for fabricating direct and indirect provisionals
- ▶ As a rigid base for Mach-2 VPS die and study models

Also Available:

- ▶ Green-Mousse: A durometer of 60 that is also scannable.



Paul S. Petrunaro, DDS, MS



Gregg A Helvey, DDS, MAGD, CDT



Standard Cartridge



Split Cartridge



Item #	Product	Price
See chart below	Blu-Mousse® 50 ml Cartridge Kit (2) 50 ml cartridges (100 ml ttl.) and mixing tips.	\$48.16
S343	50 ml Split Cartridge Dispensing Gun	\$89.99
S445	50 ml Split Cartridge Mixing Tip - Pink Base (30)	\$32.56
S439K	50 ml Standard Cartridge Mixing Tip - Clear (30)	\$32.56
S436	Blu-Mousse® Classic (Tubes) (1) tube of Base and (1) tube of Catalyst.	\$48.16

50 ml Kit Item #	S457S	S448S	S440S	S438S	S437S
Set time	30 Sec.	30 Sec.	60 Sec.	2 Min.	2 Min.
Scent	Unscented	Peppermint	Unscented	Unscented	Peppermint
Cartridge Type	Split / Standard	Split	Split	Split / Standard	Split

Green-Mousse®

VPS Bite Registration Material



- ▶ Specially formulated for cases that require greater flexibility (60-durometer).
- ▶ 2 Minute Set Time.
- ▶ Scannable.
- ▶ Ideal for areas of the mouth too difficult to capture an accurate intraoral scan.



Item #	Product	Price
S455S	Green-Mousse® 50 ml Cartridge Kit (2) 50 ml split cartridges (100 ml ttl.) and mixing tips.	\$48.16



Cinch®

Vinyl Polysiloxane Dental Impression Material

Choice of viscosities,
working and setting times.

Precision Impressions at Their Best

- ▶ Exceptionally accurate, hydrophilic and strong.
- ▶ Versatile material that can be used as a final impression material or an alginate substitute.
- ▶ Choice of viscosities, working and setting times.

Simplify Your Operatory

If you are switching between a VPS material for final impressions and an alginate substitute for other situations, make the switch to Cinch® for both applications! Its unique properties are exceptionally adaptable and capable of capturing all of the finer details of a preparation area. You'll be amazed by how much time you save! The accuracy of a final impression material like Cinch is far greater than what's required in alginate substitute materials.



50 ml Kits, Accessories & Refills

Item #	Product	Price
See chart below	Cinch® 50 ml Cartridge Kits (4) 50 ml cartridges (200 ml ttl.), mixing tips.	\$59.52
S343	50ml Split Cartridge Dispensing Gun	\$89.99
S445	Mixing Tip - Pink Base (30) tips	\$32.56
S496	Mixing Tip - Blue-Green Base (30) tips Use with Cinch Putty & Heavy	\$32.56

380 ml Kits, Accessories & Refills

Item #	Product	Price
S465	Quick Cinch® Heavy 380 ml Super Cartridge (1) 380 ml Cartridge, Mixing tips.	\$137.43
S466	Cinch® Platinum 380 ml Super Cartridge (1) 380 ml Cartridge, Mixing tips.	\$137.43
S464	Cinch® 90 380 ml Super Cartridge (1) 380 ml Cartridge, Mixing tips.	\$137.43
S472	Tips for 380 ml Super-Cartridge (50)	\$47.89

Tubes

Item #	Product	Price
S435	Cinch® Platinum Medium Tubes No dispensing gun required. (4) tubes (2 Catalyst & 2 Base) 320 ml ttl.	\$59.24

Viscosity	Quick Cinch® Light	Cinch® Light	Cinch® 90 Medium	Cinch® Platinum Medium	Quick Cinch® Heavy	Cinch® AutoMix Putty
50 ml Kit Item #	S461S	S460S	S453S	S454S	S463S	S456S
Set time	90 sec.	4 min.	90 sec	4 min.	90 sec.	4 min.
Working time	60 sec.	3 min.	60 sec.	3 min.	60 sec.	3 min.

MACH²

30-Second Set Die Silicone

Reliable Working Dies in Just Minutes

- ▶ Flows beautifully—better than stone—to create a smoother die and to capture minute detail.
- ▶ No hand-mixing—inject it directly from the automix cartridge into impression.
- ▶ Exceptionally hard set—90+ Durometer.
- ▶ Slightly flexible, so composite inlays release easily.



Mach with
Blu-Mousse

Item #	Product	Price
S433S	Mach-2® 50 ml Kit (2) 50 ml automix cartridges (100 ml ttl.), (10) mixing tips, (10) intraoral tips.	\$56.23
S432S	Mach-2® Die-Silicone Starter Set (1) 50 ml automix cartridge of MACH-2, (2) 50 ml automix cartridges of Super-Fast Blu-Mousse® (100 ml ttl.), (4) Reusable base trays, mixing and intraoral tips.	\$84.65
S343	50 ml Split Cartridge Dispensing Gun	\$89.99
S302	50 ml Mixing Tip Mixing Tip - Yellow (30)	\$32.56
S303	50 ml Intraoral Tip - Yellow (50) Use w/ Mixing Tip S302	\$35.71



SINGLE-USE STERILE DIAMOND BURS

DIAMOND Burs

Introducing the NEW Line of Parkell's Single-Use Sterile Diamond Burs.

- ▶ Get a fresh cut with clear precise margins every time.
- ▶ Eliminate reprocessing time needed for multi-use diamonds.
- ▶ Broad range of sizes and grits available.
- ▶ Single-patient use eliminates the concern of cross-contamination.
- ▶ Premium individually wrapped diamonds at affordable prices.

If you're tired of spending a lot for reusable diamonds that stop cutting after several uses now is the time to transition to Parkell's new line of pre-sterilized single-use diamonds. For a cost that's just a fraction of multi-use diamonds, you will get consistently faster cuts that are sure to shorten the chair time needed with every patient.

Available in popular shapes and grits Parkell's diamonds come individually sealed in a windowed pouch so you can see the shape of the diamond that's inside. All you have to do is open the package, stick it in the handpiece and you're ready to prep.



Crafted in *Italy*

Item #	Product	Price
See chart on right	Sterile, Single-Use Diamond Burs (10) burs/pack	\$19.89

Ready to Switch?

If you've been using our previous diamond burs, view our **Diamond Bur Conversion Chart** to see which of our new single-use diamond burs will be the best replacement.

See page
19



CONVERSION CHART

Grit Size Designation








Super Coarse (SC) 149 - 177 µm*	Fine (F) 38 - 45 µm
Coarse (C) 105 - 149 µm	Very Fine (VF) 30 - 38 µm
Medium (M) 62 - 125 µm	* µm measures Microns

	Pointed Football			Football		Round	Inverted Cone	Barrel
Shape	368-016	368-021	368-023	379-018	379-023	801-018	805-014	811-033
Diameter (mm)	1.6	2.1	2.3	1.8	2.3	1.8	1.4	3.3
Head Length (mm)	3.4	4.5	5.0	3.4	3.9	1.7	1.4	5.0
Tip Diameter (mm)	—	—	—	—	—	—	1.4	1.8
Item/Grit Size	SDS-368-016M	SDS-368-021C	SDS-368-023M	SDS-379-018M	SDS-379-023C SDS-379-023F	SDS-801-018C	SDS-805-014M	SDS-811-033C
Replacement for	SD368-016	—	SD285-5	SD379-018	—	SD120	SD320-2	—

	Pear	Acorn	Tri-Wheel Depth Cutter		Round End Cylinder	Beveled Cylinder	Wheel	
Shape	830-012	905-027	834-016	834-021	881-014	885-012	909-035	909-042
Diameter (mm)	1.2	2.7	1.6	2.1	1.4	1.2	3.5	4.2
Head Length (mm)	3.0	2.9	6.0	6.0	8.0	8.0	1.5	1.2
Tip Diameter (mm)	1.2	0.3	—	—	1.4	1.2	—	—
Depth	—	—	0.3	0.5	—	—	—	—
Item/Grit Size	SDS-830-012M	SDS-905-027M	SDS-834-016M	SDS-834-021M	SDS-881-014M	SDS-885-012C	SDS-909-035C	SDS-909-042C
Replacement for	SD830-012	—	—	—	SD881-014	—	—	SD863

	Flat End Cylinder	Flat End Taper	Finishing		Flat End Cylinder			Round End Cylinder
Shape	6051-017	6055-018	SE4	SE6	835-014	837-012	837-014	838-010
Diameter (mm)	1.7	1.8	—	—	1.4	1.2	1.4	1.0
Head Length (mm)	9.0	9.0	4.0	6.0	4.0	8.0	8.0	4.0
Tip Diameter (mm)	1.7	1.7	0.5	0.6	1.4	1.2	1.4	1.0
Item/Grit Size	SDS-6051-017C	SDS-6055-018C	SDS-SE4F SDS-SE4VF	SDS-SE6F SDS-SE6VF	SDS-835-014C	SDS-837-012M	SDS-837-014M	SDS-838-010C
Replacement for	—	—	—	—	SD520-4	—	—	—

	Needle			Flame			
Shape	858-014	859-014	859-016	860-012	862-012	862-014	868-021
Diameter (mm)	1.4	1.4	1.6	1.2	1.2	1.4	1.6
Head Length (mm)	8.0	10.0	10.0	4.0	8.0	8.0	5.0
Tip Diameter (mm)	0.5	0.4	0.6	0.45	0.35	0.45	0.2
Item/Grit Size	SDS-858-014C	SDS-859-014VF	SDS-859-016M SDS-859-016F	SDS-860-012M SDS-860-012F	SDS-862-012M SDS-862-012F	SDS-862-014C SDS-862-014M SDS-862-014F	SDS-868-021VF
Replacement for	—	SD1859-015	—	SD1274-015	SD862-012	SD265-8	—

							
	Flat End Taper		Modified Flat End Taper	Round End Taper			
Shape	847-016	847-018	845KR-016	850-016	855-018	856-016	856-018
Diameter (mm)	1.6	1.8	1.6	1.6	1.8	1.6	1.8
Head Length (mm)	8.0	8.0	4.0	10.0	6.0	8.0	8.0
Tip Diameter (mm)	1.0	1.2	1.2	1.0	1.2	1.0	1.2
Item/Grit Size	SDS-847-016C	SDS-847-018SC	SDS-845KR-016C	SDS-850-016C	SDS-855-018M	SDS-856-016SC	SDS-856-018SC
		SDS-847-018C				SDS-856-016C	SDS-856-018C
Replacement for	SD703-8	SD703-8	—	—	—	—	SD770-8



C-I™ White Glass Fiber Posts

Parkell's C-I White Glass Fiber Posts feature enhanced radiopacity for an easier read on x-ray images. They're composed of a fiberglass/epoxy resin, whose fibers are braided like a glass splinting ribbon to improve strength, stiffness and resist fatigue. A cervical bulge reinforces the post and helps resist marginal opening due to flexing.

Each post is designed to a precise 2.6° taper for safe placement with maximum post length, smooth venting of excess cement and reduced risk of root perforation.



C-I™ White Glass Fiber posts (prefabricated):

Item #	Product	Price
S090	FINE Starter Kit: White C-I Glass Fiber post (20) posts, (2) drills (B & C). Your Gates Glidden drill replaces the "A" drill.	\$173.61
S091	FINE White C-I Glass Fiber post Refill (20) FINE white fiber posts.	\$133.17
S093	MEDIUM Starter Kit: White C-I Glass Fiber post (20) posts, (2) drills (B & C). Your Gates Glidden drill replaces the "A" drill.	\$173.61
S094	MEDIUM White C-I Glass Fiber post Refill (20) MEDIUM white fiber posts.	\$133.17

C-I™ Stainless Steel posts—flat head (for single visit chairside post and core):



Item #	Product	Price
S114	Kit #3 MEDIUM Stainless Steel Starter Kit—flat head (20) MEDIUM flat-head stainless steel posts, (20) plastic core patterns, (3) drills-MEDIUM (A, B, C).	\$166.68
S119	#3 MEDIUM Stainless Steel Post Refill—flat head (20) MEDIUM posts and (1) "C"-drill.	\$107.27
S120	Kit #4 FINE Stainless Steel Starter Kit—flat head (20) FINE posts, (20) plastic core patterns, (3) drills-FINE (A, B, C).	\$166.68
S125	#4 FINE Stainless Steel Post Refill—flat head (20) FINE posts and (1) "C"-drill.	\$107.27

C-I™ Plastic Burn-out & Stainless Steel Temporary posts (for custom cast post & core):



Item #	Product	Price
S100	Kit # 1 FINE Starter Kit (10) FINE blue plastic burn-out posts, (10) FINE stainless steel temporary posts, (10) plastic core patterns and (3) drills-FINE (A, B, C).	\$147.17
S105	#1 FINE Stainless Steel Temporary Post Refill (10) FINE stainless steel posts.	\$49.57
S106	#1 FINE Plastic Burn-out Post Refill (10) FINE blue plastic burn-out posts.	\$37.33
S107	Kit #2 MEDIUM Starter Kit (10) MEDIUM yellow plastic burn-out posts, (10) MEDIUM stainless steel temporary posts, (10) plastic core patterns, (3) drills-MEDIUM (A, B, C).	\$147.17
S112	#2 MEDIUM Stainless Steel Temporary Post Refill (10) MEDIUM stainless steel posts.	\$49.57
S113	Burn-out Post Refill (10) MEDIUM yellow plastic posts.	\$37.33

Drill Refills (for all C-I™ Post Systems):



Item #	Product	Price
S101	"A" FINE Drill (For use with all FINE posts.)	\$20.60 ea.
S102	"B" FINE Drill (For use with all FINE posts.)	\$24.38 ea.
S103	"C" FINE Drill (For use with all FINE posts.)	\$21.47 ea.
S104	FINE Drill Set-complete (1) each; A, B and C drills. (For use with all FINE posts.)	\$62.53
S108	"A" MEDIUM Drill (For use with all MEDIUM posts.)	\$20.60 ea.
S109	"B" MEDIUM Drill (For use with all MEDIUM posts.)	\$24.38 ea.
S110	"C" MEDIUM Drill (For use with all MEDIUM posts.)	\$21.47 ea.
S111	MEDIUM Drill Set-complete (1) each; A, B, and C drills. (For use with all MEDIUM posts.)	\$62.53

TurboVue

ILLUMINATED ULTRASONIC SCALER

*TurboVue® Scaler
required for Illumination.*



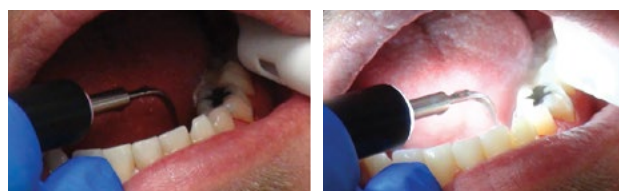
You Can See Clearly Now, the Strain is Gone!

- ▶ 30K Inserts transmit light from the handpiece.
- ▶ Auto-tuning technology.
- ▶ Dramatically expanded low-power range improves comfort.
- ▶ Power-boosting Turbo feature when more power is needed.
- ▶ External water filter prevents clogs and drips.

This uniquely engineered device provides excellent visibility when scaling all areas of the oral cavity. The TurboVue features a light source built into the handpiece allowing a significant amount of light to emit through the 30K, light-transmitting ultrasonic inserts.

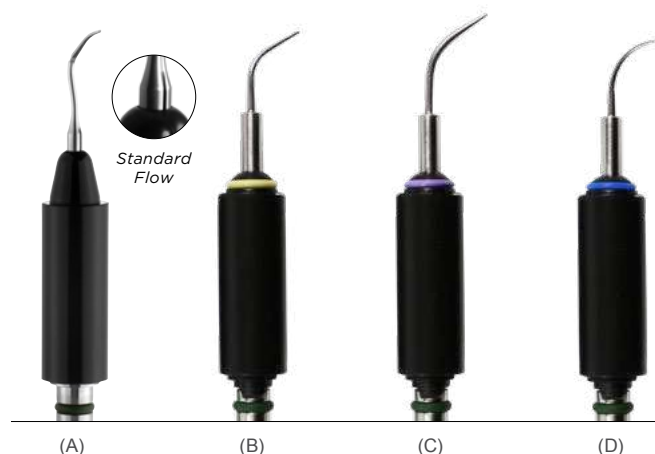
Whether it's the distal of a second maxillary or mandibular molar, a furcation or a deep lingual pocket you're trying to access, the intense light of the TurboVue will illuminate even the toughest corners ensuring that you won't miss anything. Plus, the light saves on the operator's eyes. No more squinting or messing with the overhead lamp or loupes.

The TurboVue also features auto-tuning technology, a dramatically expanded low-power range that improves comfort during debridement, and a power-boosting Turbo feature for an increase in scaling power when needed.



Without Illumination

With Illumination



Specifications:

- Size of Unit: 1 "H x 5 ½"W x 7 ½"D (41mm x 140mm x 190mm)
- Weight of Unit: 2.70 lbs (1.22 kg) (43.2 oz)
- Length of Handpiece Cable: 7' (215cm)
- Length of Foot Pedal Cable: 7' (215cm)
- Length of Water Hose: 7'6" (230cm)
- Length of Power Cord: 110V: 12'6" (380cm); 220/230V: 7'6" (230cm)
- Certifications: All electrical devices have been certified to IEC 60601-1, IEC 60601-1-2 and CAN/CSA C22.2 and are TUV listed.
- 110V (220V/230V also available)

SKU #	Product	Price
D570	TurboVue® Illuminated Ultrasonic Scaler (1) scaler with attached handpiece, (1) foot controller, (1) water line, (1) In-line water filter with spare disk and water connection with quick disconnect, (1) Transformer with cable. NOTE: TurboVue Insert required for illumination.	\$1,348.13
DLH30Tri	(A) Triple-Bend Light-Transmitting 30K Insert with Standard Flow	\$199.51
DLH30T	(B) Burnett Power-Tip V Light-Transmitting 30K Insert	\$199.51
DLH30U	(C) Universal Tip V Light-Transmitting 30K Insert	\$199.51
DLH30P	(D) Straight Perio Tip V Light-Transmitting 30K Insert	\$199.51



INTEGRA™

Ultrasonic Scaler System

A Full Featured, Portable Scaler

- ▶ External AND internal water sources.
- ▶ Easy-to-clean touch panel.
- ▶ Autoclavable handpiece sheaths improve infection control.
- ▶ Digital touch control for power and water flow.
- ▶ Easily-removable reservoirs.
- ▶ Automatically adjusts operating frequency to power any Parkell 25KHz or 30KHz insert.

With its self-contained irrigant reservoirs the Integra frees you from having to connect a waterline to your dental unit's water source. This easily portable scaler can be effortlessly moved from operator to operator when needed. It can also be taken to remote locations where water connections may not be available.



Insert not included.



Doing Hygiene On the Move?

This fully integrated scaling system features a stable reservoir bottle design allowing the operator to gently move the scaler from operator to operator (on a mobile cart) without spilling the liquids from the bottles.



When you adjust the power using either the touch panel or the foot pedal, color-coded lights indicate the operating power:

Comfortable low-power debridement for maintenance scaling.

Conventional scaling.

Extreme scaling for tenacious calculus.



Item #	Product	Price
D680-110	Integra™ Ultrasonic Scaling System (1) scaler, (1) power supply, (1) foot pedal, (2) irrigant reservoirs, (2) autoclavable handpiece sheaths. Insert not included.	\$1,672.20
D681	Replacement Integra™ Reservoir Bottles (2) bottles with caps (each bottle holds approximately 16oz. of fluid)	\$16.31
D350	Foot Switch for Integra™ (110v & 230v)	\$166.06
D406	Braided Scaler Water Hose w/ Fitting - 7'	\$33.85
D419	Replacement Water Filter Disks (10)	\$48.16

Specifications:

- **Overall Size:** 5"W x 6"H x 11 1/2"D (130 mm x 150 mm x 290 mm)
- **Weight:** 110V—4lbs 2oz (1.87 kg); 220/230V—4 lbs (1.81 kg)
- **Length of Handpiece Cable:** 6' 9" (205 cm)
- **Length of Foot Pedal Cable:** 7' 6" (230 cm)
- **Length of Power Cord:** 110V: 12' 6" (380 cm); 220/230V: 7' 6" (230 cm)
- **Length of Water Supply Hose:** 7' (215 cm)
- **Certifications:** All electrical devices have been certified to IEC 60601-1, IEC 60601-1-2 and CAN/CSA C22.2 and are TUV listed.
- 110V (220V/230V also available)

3 YEAR WARRANTY



Turbo SENSOR[™]

Ultrasonic Scaler



Reliable, Durable, Practical, All in One!

- ▶ Automatically adjusts frequency to power any 25KHz or 30KHz Parkell insert.
- ▶ Autoclavable handpiece sheaths improve infection control.
- ▶ On-demand foot-controlled Turbo Power Boost for heavy calculus.
- ▶ Expanded low-power "Perio" mode.

If you're looking for a versatile scaler with clearly marked intuitive controls that delivers dependable results day after day, you've come to the right place.

Considered the backbone of many office's hygiene departments, Parkell's TurboSensor simplifies the setup process by automatically detecting the frequency of a Parkell insert and adjusting the scaler's frequency to work with it.

The TurboSensor's broad range of power easily accommodates both the sensitive patient with light deposit to the patient who hasn't had a professional scaling in years, as well as everyone in between.



Convenience and control with the TurboSensor's foot pedal.



Preinstalled in-line water filter (D419). Unit comes with two total.



The male quick-connect coupler at the end of the water hose allows you to easily connect the unit to your water source.



Includes two autoclavable handpiece sheaths, made of high-temperature resin to last and keep asepsis (D576).



Specifications:

- **Size of Unit:** 1 1/2"H x 5 1/2"W x 7 1/2"D
- **Weight of Unit:** 2.70 lbs (1.22 kg) (43.2 oz)
- **Weight of Transformer:** 3.85 lbs (1.75 kg) (61.6 oz)
- **Length of Handpiece Cable:** 7' (215cm)
- **Length of Foot Pedal Cable:** 7' (215cm)
- **Length of Water Hose:** 7'6" (230cm)
- **Length of Foot Pedal Cable:** 7' (215cm)
- **Length of Power Cord:** 110V: 12'6" (380cm); 220/230V: 7'6" (230cm)
- **Total Length of Transformer Cable from Wall Outlet to Unit:** 12'6" (380cm)
- **Certifications:** All electrical devices have been certified to IEC 60601-1, IEC 60601-1-2 and CAN/CSA C22.2 and are TUV listed.
- 110V (220V/230V also available)

Item #	Product	Price
D560-110	TurboSENSOR[™] Ultrasonic Scaler (1) scaler, (2) autoclavable handpiece sheaths, (1) in-line water filter with spare disk, (1) quick-disconnect water connection and (1) foot controller.	\$949.79
D419	Replacement Water Filter Disks (10 disks)	\$48.16
D418	Water Filter Assembly Kit (2) Filter Disks, (2) Clear plastic ferrules, (1) White female connector and (1) White male connector	\$24.76
D576	Autoclavable Handpiece Sheath	\$70.81



Ultrasonic Inserts








Buyer's Guide

With so many variables and options to choose from; tip style, power, grips, light-transmitting, water flow, it can be daunting and often confusing to decide which one best suits your needs. We've broken everything down to help you make that decision picking the right tool for the right job.

Still Unsure?

Feel free to call us here at Parkell 800-243-7446 and we will be happy to further walk you through all of your options and any questions you may still have.

Tip

							
STYLE	Universal	Straight Perio	Burnett	Triple Bend	Beaver Tail	Curved Perio	GentleClean
BENEFIT	<ul style="list-style-type: none">• Strong, durable	<ul style="list-style-type: none">• Thinner tip design promotes easy interproximal access even between tightly spaced lower anteriors.• More gentle for patient due to reduced vibration	<ul style="list-style-type: none">• Longer, thinner and straighter tip than Universal promotes placement deep into pockets• Uniquely designed to provide 70% more energy transfer to blast through the most tenacious calculus deposits	<ul style="list-style-type: none">• Uniquely contoured for improved access to all tooth surfaces• Beveled edge to mimic hand scalers	<ul style="list-style-type: none">• Thick, wide and flat for the removal of heavy deposits, stains and orthodontic cements	<ul style="list-style-type: none">• Better access to difficult to reach areas such as complex root anatomy, furcations, malpositioned teeth	<ul style="list-style-type: none">• Ideal for patients with braces who have hyperplastic tissue around the brackets due to poor home care• Won't scratch implant surfaces• Non-abrasive, single-patient disposable tips
SPECIALTY	Basic supragingival scaling (limited use interproximally and subgingivally)	Rounded tip enables subgingival placement up to 3mm	Higher vibration compared to all other inserts when using maximum power level	Primarily for Supragingival (limited subgingival use when tissue condition permits)	Supragingival use only	Supragingival use, with Subgingival placement up to 3mm	For removal of plaque and light calculus from both implants and teeth
PRIMARY USE	For moderate to heavy deposits	Light to moderate deposits	Moderate to extra heavy supra and subgingival deposits	Moderate to heavy deposits and stains	Moderate to heavy deposits and stains	Light to moderate deposits	Plaque and light calculus
POWER	Any	Low - Medium	Any	Any	Any	Low - Medium	Low - Medium
SKU #	DUI30, DUI25, DLH30U, DCG30SLIM, DSG30U,	DPI30, DPI25, DLH30P, DSG30P,	DTI30, DTI25, DSG30T, DLH30T,	DLH30TRI, DCG30TRI	DBI30, DBI25	DPR30, DPL30, DPL25, DSG30R-P, DSG30R, DSG30L	DSG30GC

25K or 30K (Frequency of Operation)

There are three types of Magnetostrictive scalers; those that accept 25K inserts, those that accept 30K inserts, and those that accept both. If you choose the wrong insert for your scaler two things can happen:

- The scaler will not operate
- The insert will not fit in the handpiece (25K inserts won't fit in a 30K handpiece)

Parkell's TurboSensor® (D560-110) and Integra® (D680-110) work with both 25K and 30K inserts. Parkell's TurboVue® (D570-110) only works with 30K.



HELPFUL HINT: Inserts don't last forever, but do you know exactly when the time is right to replace them? Believe it or not a cup of coffee can help you determine if your insert is ready for the sharps container, or if it can continue to fight the good fight against calculus. See it for yourself at www.parkell.com/inserts-coffee-test

Handpiece Sheaths

If your office is still wiping down the scaler handpiece between patients, now is a good time to take your scaler infection control to the next level by removing and autoclaving the handpiece sheath after each patient.

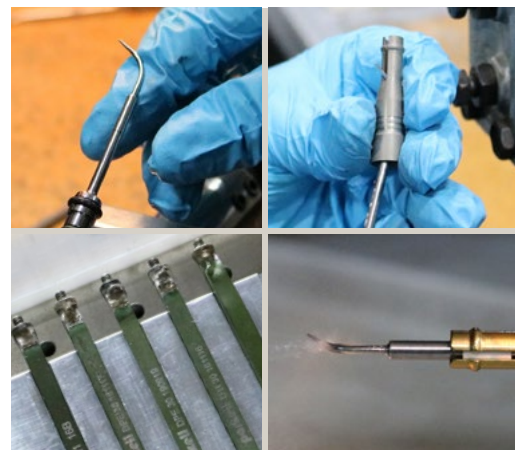
Parkell's TurboSensor®, TurboVue® and Integra® all have removable and autoclavable handpiece sheaths. To calculate the minimum number you need, divide the number of hygiene patients you see each day by the number of times you run the autoclave.



HELPFUL HINT: If you're an office that mostly uses one insert per patient hygiene recare appointment, bag a handpiece sheath with each insert and sterilize them together.

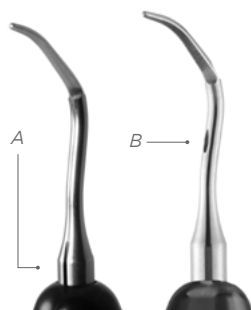
Grip

CLASSIC	Our original metal grip. Over its 31mm of length the width tapers in diameter from just over 10mm to 6mm.
SOFT GRIP	Our first generation soft grip has a vinyl casing that provides extra cushioning. A gentle contour of the diameter between 10 and 11mm helps make you aware how close you are to the end without looking as you move your fingers up and down the grip for access to different parts of the mouth.
COMFORT GRIP	Our second generation soft grip offers the most comfort. Designed by insert engineers, this 12mm wide grip with a tire-like tread pattern helps you securely grasp the insert without the need of excessive pressure. This can help lessen the chances of hand fatigue after a long day of scaling.



Water Flow

STANDARD	Water is delivered from the base of the tip (A)
PRECISION	<p>Water is delivered close to the tip (B)</p> <p>Advantages:</p> <ul style="list-style-type: none"> • A more effective lavage of the treatment site. • Improved visibility • Potential for a decrease in aerosol depending on the scaler setting



Durable. Reliable. Effective.

When you use a Parkell insert, you'll quickly understand what a solid, well-balanced insert should feel like.

Using the highest quality stainless steel, each and every insert we make here at Parkell is **hand-assembled like a custom piece of jewelry**. Inspected, tested and finely-tuned for optimizing your scaler's performance, Parkell inserts will out-perform and outlast other inserts.

Sure, you may find an insert that costs less, but in the long haul, you'll actually spend MORE money replacing those cheaper, lesser quality inserts than if you had purchased a Parkell insert from the start.



Burnett POWER-TIP™

Stainless Inserts & Soft-Grip Insert

- ▶ 70% More power—much greater power than a Universal or Perio insert.
- ▶ Longer, slim design reaches into narrow spaces.
- ▶ Robust enough to smooth plaque-trapping overhangs and remove proximal accretions and stubborn cements.
- ▶ Soft-grip provides more comfort and lessens finger vibration.

The Burnett Power-Tip™ Stainless is our toughest insert on hard calculus. Its mass is greater along the working portion of the tip, so it has more momentum when it hits the calculus and transfers about 70% more energy. Nothing works better than the Burnett when you are tackling flinty root calculus, interproximal accretions or amalgam overhangs!

Item #	Product	Price
DTI25	25K Burnett Power-Tip™ Stainless Insert	\$185.80
DTI30	30K Burnett Power-Tip™ Stainless Insert	\$185.80
DSG30T	30K Burnett Power-Tip™ Soft-Grip Insert	\$185.80

Stainless Steel Grip Inserts

- ▶ Rugged, stainless steel, one-piece grips that won't crack or leak.
- ▶ Focused irrigant delivery gets the coolant precisely where it's needed.
- ▶ Unique silicone muffler reduces noise.
- ▶ Fully autoclavable.
- ▶ Parkell's quality-control process assures spot-on frequency, tip oscillation and water flow.

Item #	Product	Price
DUI25	25KHz Universal Internal Water Insert	\$146.90
DUI30	30KHz Universal Internal Water Insert	\$146.90
DPI25	25KHz Straight Perio Internal Water Insert	\$153.97
DPI30	30KHz Straight Perio Internal Water Insert	\$153.97
DBI30	30KHz Beaver Tail Insert	\$152.54
DPR30	30KHz Right Curved Perio Internal Water Insert	\$178.80
DPL30	30KHz Left Curved Perio Internal Water Insert	\$178.80



ComfortGrip™




Ultrasonic Inserts

- ▶ Well balanced for operator comfort.
- ▶ Ergonomic grip design.
- ▶ Two types of water delivery.
- ▶ Hand assembled & tested.
- ▶ Sturdy & durable.

With Standard Flow inserts, the water for irrigating and cooling the tip exits from the neck of the instrument (A). During use, the vibration of the tip causes water to travel down the shaft and to the end of the tip, where lavage can occur.

With our new Precision Flow inserts, the water for irrigating and cooling the tip exits a location closer to the working end of the tip (B). This can bring about the following advantages: reduction in the amount of water needed during scaling, and easier suctioning of the field due to less spray.

Either style is capable of performing effective deposit removal with proper irrigation and cooling, so the choice is really what you the user prefers.

Item #	Product	Price
DCG30Tri	 30K Triple Bend Comfort Grip Insert (Standard Flow)	\$192.87
DCG30Uni-PF	 30K Universal Comfort Grip Insert (Precision Flow)	\$213.23
DCG30Slim	 30K Universal Slim Comfort Grip Insert (Standard Flow)	\$192.87

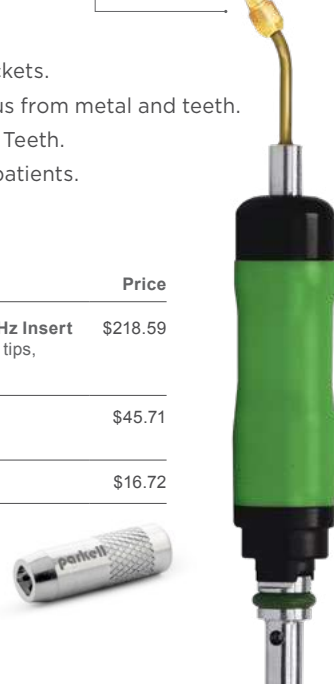


GentleCLEAN™

Specialty Insert

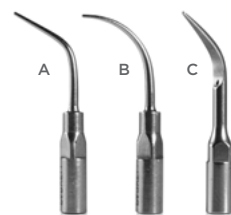
- ▶ Use on implants and orthodontic brackets.
- ▶ Removes biofilm plaque & soft calculus from metal and teeth.
- ▶ Will not scratch Titanium, Zirconia, or Teeth.
- ▶ Ideal for children and hypersensitive patients.
- ▶ Won't damage restoration margins.

Item #	Product	Price
DSG30GC	GentleCLEAN™ Soft-Grip 30KHz Insert (1) 30KHz insert, (50) disposable tips, (1) Tip Wrench	\$218.59
DSG30GCT	GentleCLEAN™ Tips (50) disposable tips	\$45.71
DSG30GCW	GentleCLEAN™ Tip Wrench	\$16.72

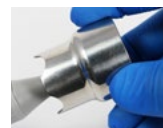


Piezo Tips

- ▶ Easy to handle.
- ▶ Durable.



Item #	Product	Price
D695	(A) Piezo Burnett Power-Tip™	\$122.05
D693	(B) Piezo Perio Tip	\$112.88
D692	(C) Piezo Universal Straight Tip	\$98.23
D691	(D) Piezo Torque Tip Wrench	\$77.44
D694	(E) TurboPiezo™ Handpiece	\$306.51



EPIC[®]-TMPT

Light-Cure Composite Resin

The Perfect Composite for Class V Restorations

- ▶ More resilient than traditional microfill and hybrid composites.
- ▶ Reduces chances of leakage, sensitivity, staining, and pop-out.
- ▶ Flexes with the tooth to reduce stress at the margin.
- ▶ Reactive organic filler particles chemically bonds to the resin matrix.
- ▶ Polishes to a high surface luster finish.



Ross W. Nash, DDS



Syringes				
Item #	Shade	Item #	Shade	Price
S356	A1	S358	B4	\$65.59 ea. Each Item includes (1) 3 gm syringe of that shade.
S361	A2	S366	C2	
S362	A3	S367	C3	
S363	A3.5	S368	C4	
S357	A4	S369	D4	
S355	B1	S360	Universal-Shade between B2 & B3	
S364	B2	S359	Incisal	
S365	B3			



Unit Dose Capsules		
Item #	Shade	Price
S356UD	A1	\$89.94 ea. Each Item includes (15) .25 gm capsules of that shade, 3.75 gm total. Fits Centrix [®] gun, not included.)
S361UD	A2	
S362UD	A3	
S363UD	A3.5	
S357UD	A4	
S366UD	C2	
S360UD	Universal-Shade between B2 & B3	



Self-Cure Provisional Resin



- ▶ Reduced heat during set.
- ▶ Available in multiple shades.
- ▶ Features a true doughy stage suitable for hand molding.
- ▶ Heightened marginal accuracy for better seal.
- ▶ Color stable.
- ▶ Less shrinkage than methyl methacrylate-based materials.

Are your provisional crowns taking too much time to fabricate? Are you tired of taking a pre-op impression to use as a matrix for a low viscosity provisional material? Do you cringe at the thought of having to wax up a broken or severely decayed tooth on a model just to create a suck down that can be used as a template for a temporary? If you answered yes to any of the above, SNAP may be the material you are looking for.

With documented clinical success spanning for over three decades, dentists are once again realizing the simplest and easiest way to make a temporary is when you can do it by hand. SNAP's ethyl methacrylate formulation produces less heat, and less shrinkage, so its kinder to the pulp during fabrication, and more tightly adapted to the margins once cemented.

Item #	Product	Price
S424	Snap[®] Starter Kit (1) bottle of liquid monomer (4oz.), (4) shades of powder: (62/A2, 65/A3/D3, 69/C2/D4, 77/B3/B4)	\$94.05
S441	SNAP Liquid Monomer (1) 4oz. bottle	\$27.27

SNAP Powder Refills

Shade (Vita/Bioform)	40g Powder \$25.19	170g Powder \$77.00
B1 (59)	S451	S452
B2 (61)	S425	
A2 (62)	S459	S447
A3/D3 (65)	S426	S443
C2/D4 (69)	S449	S450
B3/B4 (77)	S427	
A3.5/B3 (81)	S479	
Clear	S429	S434



Fast. Strong. Beautiful.

The Smart Choice in Temporization.



NEW!

SmarTemp[®] X1

Temporary Crown & Bridge Material

- Life-like aesthetics due to its unique translucency and fluorescence.
- 10:1 chemistry provides high abrasion resistance and flexibility for long-term durability.
- Easy to trim and polishes beautifully.
- Available in multiple shades: A1, A2, A3, B1 & Bleach.
- Polish to a high luster shine.

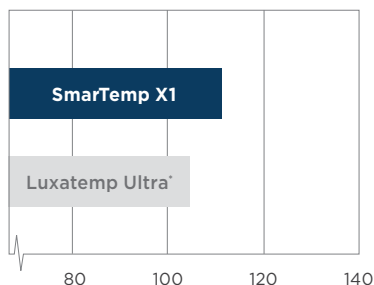
Form meets function in Parkell's new state-of-the-art temporary crown and bridge material SmarTemp[®] X1. SmarTemp X1's life-like aesthetics are only exceeded by its ability to hold up to the extreme demands that exist within the oral cavity. It's no wonder why clinicians all over the world are excited to use SmarTemp X1 as the blueprint for their final restorations.



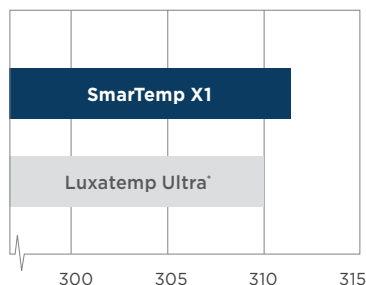
SmarTemp[®] X1 is a bis-acryl composite provisional material suitable for the fabrication of long-term, temporary inlays, onlays, crowns, bridges and veneers. The 10:1 chemistry offers easy handling with minimal shrinkage, heat generation and may be adjusted and polished to a high shine after final cure.

SmarTemp X1 delivers high flexural strength for long span bridges, and excellent abrasion resistance to maintain proper occlusion, vertical dimension and interproximal contact during extended temporization.

Flexural Strength¹ (Mpa)



Compressive Strength¹ (Mpa)



SmarTemp[®] X1 - 50 ml Kits

Item #	Shade	Price
S346-A1	A1	\$149.95
S346-A2	A2	\$149.95
S346-A3	A3	\$149.95
S346-B1	B1	\$149.95
S346-BL	Bleach	\$149.95

Kits include (1) 10:1, 50 ml auto-mix cartridge, (15) mixing tips.

Accessories & Refills

Item #	Product	Price
S349	DS-50 (4:1/10:1) Dispensing Gun	\$74.95
S347	10:1 Mixing Tips (30)	\$31.61

TIMING:

- 0:00 Working Time
- 0:45 Initial Cure within the Mouth
- 1:30 Remove During Gel State
- 2:20 Allow Material to Completely Cure
- 5:00 Adjust Provisional and Polish



¹Data on file. ^{*}Trademark of a company other than Parkell.

SENSIMATIC® 700SE ELECTROSURGE



Precision Tissue Management

- ▶ Faster cutting than a diode laser.
- ▶ Monopolar for the precise cuts.
- ▶ 10 power settings.
- ▶ 3 cutting modes; CUT, CUT/COAG, and COAG.
- ▶ Electrode wire can be adjusted to meet clinical contour needs.
- ▶ Operating frequency: 1.4 - 1.7 MHz.
- ▶ Maximum Power Output: 50 watts.

Unit Includes Six Electrodes:



Scalpel Point—T2



Large Loop—T5



Vertical Loop—T8



Horizontal Loop—T16



Hemostasis Ball—C3



Troughing Point—AP1.5



Proximal Hemostasis Electrode—P4
(Not Included with unit. Sold separately)

PLEASE BE AWARE: If you need to order a replacement Indifferent plate or handpiece for your Sensimatic 700SE, the updated components will NOT fit an original Sensimatic 700SE. New modified Sensimatic 700SE (110 volt) units have serial numbers beginning with 90000. Any 110 volt units (for USA) that have serial numbers below 90000 are of the original style. For customers whom have Sensimatic 700SE 230 volt units, the modified units begin with serial numbers 80000. If you have any questions or concerns when ordering parts for your Sensimatic 700SE units, please give us a call.

NOTE: Electrodes not covered under warranty.

Item #	Product	Price
D700SE-110	Sensimatic™ 700SE Electrosurge (1) Electrosurge unit, (6) electrodes, (1) foot switch, (1) handpiece and cable, (1) indifferent plate and cable.	\$1,291.27
S397-T02	Scalpel Point—T2 Electrode	\$25.13
S397-T05	Large Loop—T5 Electrode	\$25.13
S397-T08	Vertical Loop—T8 Electrode	\$25.13
S397-T16	Horizontal Loop—T16 Electrode	\$25.13
S397-C03	Hemostasis Ball—C3 Electrode	\$25.13
S397-AP1.5	Troughing Point—AP1.5 Electrode	\$25.13
S397-P04	Proximal Hemostasis Electrode—P4 (Not included with unit).	\$25.13
D634	Indifferent Plate	\$51.53
D703	Indifferent Plate & Red Cable (NOTE: Cable connects to <i>newer</i> units with serial numbers beginning with 90000).	\$84.65
D601	Indifferent Plate & Red Cable (NOTE: Cable connects to <i>older</i> units with serial numbers below 90000).	\$86.29
D702	Black Handpiece/Cable (NOTE: Cable connects to <i>newer</i> units with serial numbers beginning with 90000).	\$102.04
D633	Black Handpiece/Cable (NOTE: Cable connects to <i>older</i> units with serial numbers below 90000).	\$102.04



Mixing tips

\$32.56/pack of 30 tips unless otherwise noted.

- | | | |
|--|--|---|
| <p>A. (S302) Yellow Base
Mach-2, Mach-SLO,
Absolute Dentin 50 ml,
Cinch PLUS
Intraoral Tip: S303, S308
(S308 recommended for Absolute
Dentin 50 ml cart.)</p> <p>B. (S445) Pink Base
For split no-clog cartridge.
Blu-Mousse, Green-Mousse, Cinch
Light/Medium
Intraoral Tip: S439IOT</p> <p>C. (S496) Blue-Green Base
MucoSoft, MucoHard,
Cinch Putty/Heavy</p> <p>D. (S344) Blue Base
SmarTemp</p> | <p>E. (S439K) Clear Base
For STANDARD cartridge.
Blu-Mousse.
Intraoral Tip: S439IOT</p> <p>F. (S292) Brown Base
E.T.C., Retrieve</p> <p>G. (S328) Brown Base
HyperFIL 10 ml,
Absolute Dentin 10 ml
Intraoral Tip: S329, S335</p> <p>H. (S275) Brown Base-4:1
SEcure</p> <p>I. (S181) Luer Lock
Applicator Tip White Base
Pkg. of 40 tips — \$35.11
Dryz, Dryz Blu</p> | <p>J. (S472) Mixing-Machine
Cart. Pkg. of 50 tips — \$74.89
Cinch 380 ml Super-Cartridge</p> <p>K. (S621) 17 Ga. Needle/Brown
Predicta Bulk, Predicta Core</p> <p>L. (S622) 19 Ga. Needle/Brown
Predicta Bulk, Predicta Core</p> <p>M. (S383) Gel Application Tips
Pain-Free Gel, Etching Gel</p> <p>N. (S347) 10:1 SmarTemp X1
Mixing Tips
Pkg. of 30 tips— \$31.61</p> |
|--|--|---|

Intraoral tips

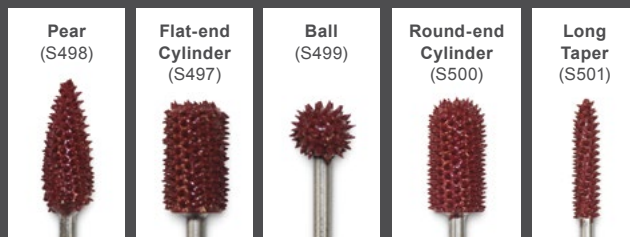
\$35.71 /pack of 50 tips unless otherwise noted.

- | | |
|--|--|
| <p>O. (S303) Yellow
Use with
Mixing Tip S302</p> <p>P. (S308) Dark Grey
Use with
Mixing Tip: S302
Recommended
for Absolute Dentin
50 ml cart</p> <p>Q. (S439IOT) White
Use with Mixing Tip:
S445, S496, S439K</p> <p>R. (S329) White
Use with Mixing Tip:
S334, S521, S328</p> <p>S. (S335) White
Root Canal
Use with Mixing Tip:
S334, S521, S328</p> | |
|--|--|



\$40.12/ea

Burs are ideal for trimming MucoSoft® relines, removing a soft reline and so much more. The modified design features longer spikes that cut even faster and resist clogging.



Have You Checked In Lately?

Login to your Parkell account or create one now at www.parkell.com to see the **NEW**:

PARKELL **ADVANTAGE**

- Lower prices
- Free ground shipping*
- Tech support
- Exclusive specials
- Early access to new products

*Free ground shipping for continental United States only.



300 Executive Drive, Edgewood, NY 11717 USA

Current Resident or:

Sensitivity?

Now you can provide fast and powerful relief from dentin hypersensitivity the **BIOACTIVE WAY!**

Predicta[®] desensitizer BIOACTIVE

NEW Predicta[®] Bioactive Desensitizer is changing the way clinicians treat dentin hypersensitivity by using the elements that are naturally found in the tooth, (calcium and phosphate) and restoring them to the tooth in the form of hydroxyapatite plugs that quickly block the open tubules. Then, as calcium and phosphate ions continue to release, mineralization occurs to further seal the tubules.

[Learn more on page 5](#)

Item #	Product	Price
S626	NEW! Single Syringe Predicta Bioactive Desensitizer Kit (1) 3 ml Syringe, (10) Applicator Tips and (15) Applicator Brushes.	\$44.95



NEW

Now available in a single syringe kit!

