

Preva DC

WHERE TECHNOLOGY MEETS SIMPLICITY...PERFECTLY



HealthCare Dental Limited

凱健牙科有限公司

23/F, 8 Commercial Tower, 8 Sun Yip Street, Chai Wan, HKSAR

香港柴灣新業街8號八號商業廣場23樓

Tel: (852) 2563 5193

Fax: (852) 2565 9537, 2805 5931

Email: sales.hcdental@hcdh.com.hk



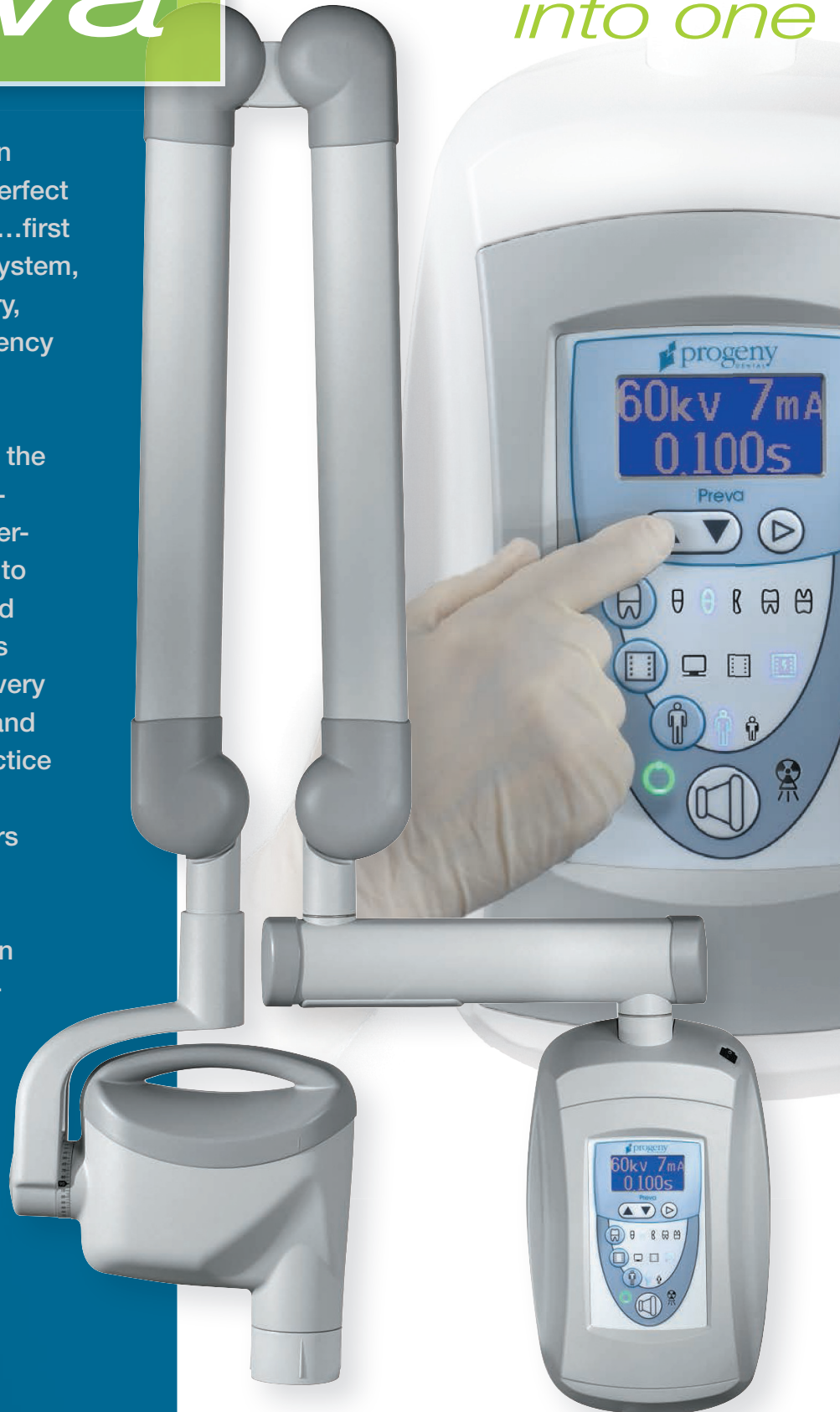
Preva

In 2002, the Progeny® design team set out to create the perfect intraoral x-ray. And they did...first with the reliable JB-70 AC system, followed by the extraordinary, industry-leading, high frequency system, the Preva DC.

Preva is the convergence of the latest DC technology, micro-processor advances and user-focused features. Designed to provide flawless imaging and enhanced workflow, Preva is the perfect foundation for every practice—film-based, PSP and digital—and offers your practice reliable performance today, tomorrow and for many years to come.

Now there are two choices in imaging excellence: Preva—the perfect foundation for every practice and every receptor; and Preva Plus, the DC intraoral x-ray with its own integrated digital sensor.

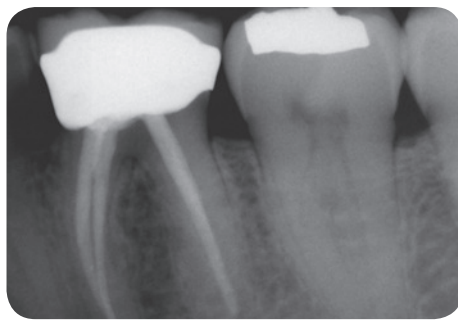
*Only Preva
into one*



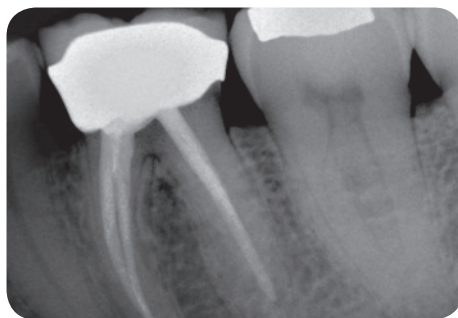
*packs so many powerful features
attractive, reliable DC system.*

The smallest focal spot equals the sharpest images

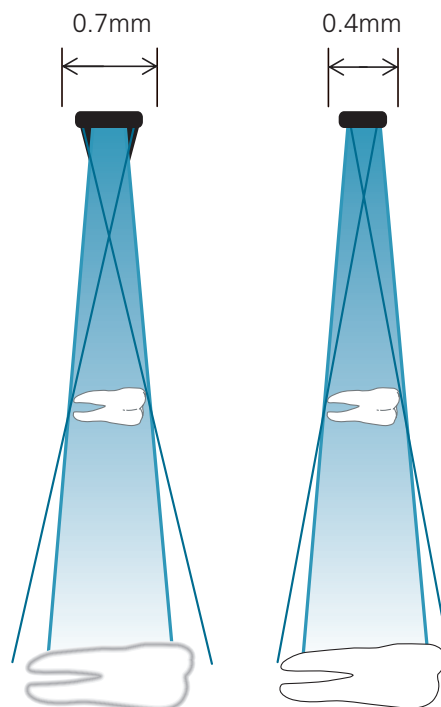
Preva's 0.4mm focal spot produces visibly higher resolution images—whether you're using film or digital sensors. Details are sharper and more defined. Small but important differences are easier to spot. Pathologies are easier to identify.



[Traditional 0.7mm focal spot]



[Preva 0.4mm focal spot]



Adjustable techniques provide complete control

With Preva, you decide how you want to see your images. A choice of selectable options allows you to determine the techniques you prefer to control gray scale, density and contrast according to clinical or procedural needs. And, only Preva combines a 0.4mm focal spot with

such a wide range of kV, mA and time choices for consistently superior diagnostic images.

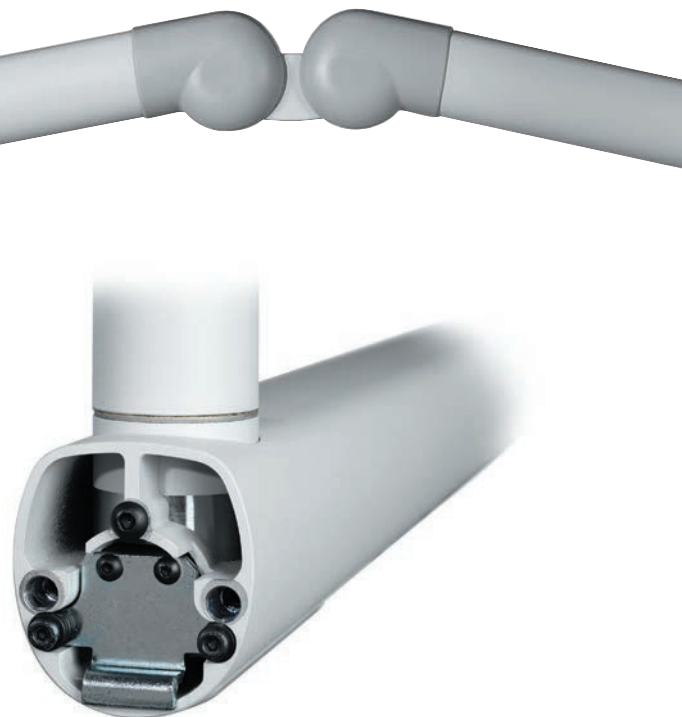
- n kV – 60, 65 and 70
- n mA – 4, 5, 6 and 7
- n Time – 0.02 seconds to 2 seconds

Enhanced work



Stable, drift-free positioning

Preva is known for its exceptional arm mechanics. Feel the exceptional balance and effortless movement. Preva's proprietary braking system contains both an outboard and an inboard brake to assure that the head stays exactly where you position it without sagging or drifting. Preva has more adjustment points than any other system and a distinctive handle design for fast one-handed positioning.



[Only Preva offers a dual arm braking system]

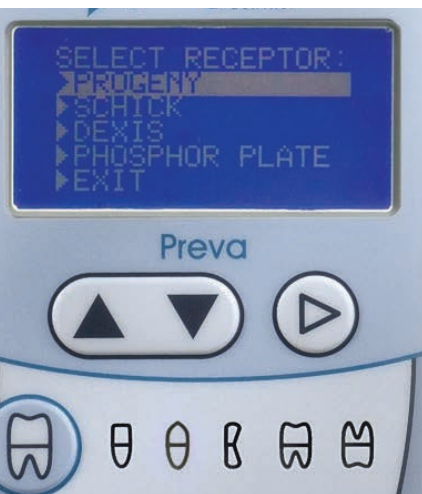
arkflow

Tailor-made for optimum efficiency

Preva's exclusive LCD display with its large, bright screen displays technique information clearly from any angle. Easy to understand icons quickly identify tooth, receptor type and patient size. 30 pre-programmed technique settings streamline set-up and preparation for every procedure and every receptor.



[56", 66", 76" and 82"* arm lengths available]
*Requires mounting plate

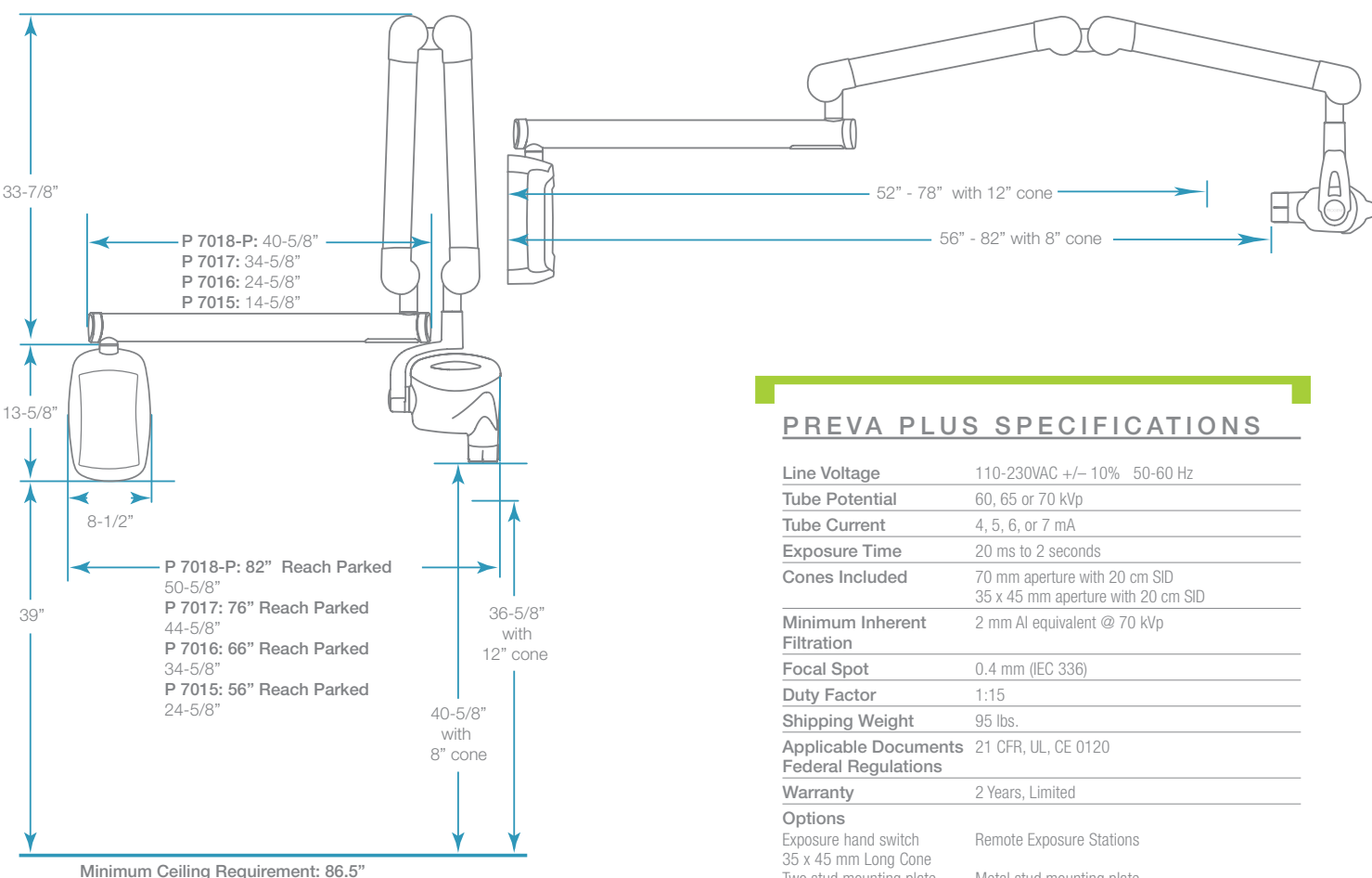


Optimize your Preva

Only Preva delivers menu options that allows you to instantly optimize your x-ray. Use the built-in menu accessed from the control panel to change preset techniques or select a specific sensor. Progeny's® unique Optimization Menu puts many options within your reach—simply.



Progeny®—the leader in intraoral x-ray systems in the U.S. and the preferred choice of dentists around the world.



Cabinet Pass Through
 66" Arm: 31" W x 47.5" H
 76" Arm: 41" W x 47.5" H

Cabinet Pass Through (Alternate)
 66" Arm: 26.75" W x 47.5" H
 76" Arm: 36.75" W x 47.5" H

Mobile
 Base: 26.9" W x 36" L
 Height: 76.9"
 Arm reach: 44"

PREVA PLUS SPECIFICATIONS

Line Voltage	110-230VAC +/- 10% 50-60 Hz
Tube Potential	60, 65 or 70 kVp
Tube Current	4, 5, 6, or 7 mA
Exposure Time	20 ms to 2 seconds
Cones Included	70 mm aperture with 20 cm SID 35 x 45 mm aperture with 20 cm SID
Minimum Inherent Filtration	2 mm Al equivalent @ 70 kVp
Focal Spot	0.4 mm (IEC 336)
Duty Factor	1:15
Shipping Weight	95 lbs.
Applicable Documents	21 CFR, UL, CE 0120
Federal Regulations	
Warranty	2 Years, Limited

Options

Exposure hand switch	Remote Exposure Stations
35 x 45 mm Long Cone	
Two stud mounting plate	Metal stud mounting plate
Choice of 56", 66", 76", or 82" (total reach) and Mobile	

Sensor

Film Size equivalent	Size 1	Size 2
Dimensions	37 x 24 x 5.5 mm	43 x 32 x 5.5 mm
Active Area	30 x 20 mm	36 x 26 mm
Sensor Cable	90 cm	90 cm
Computer Interface	High Speed USB 2.0	High Speed USB 2.0

Computer Requirements

Please see www.progenydenal.com for operating system and hardware requirements

Contact your Midmark representative for additional system requirement information.

midmark.com

675 Heathrow Drive Lincolnshire, IL 60069
 847-415-9800 Toll-free 888-924-3800

©Midmark 2013 All Rights Reserved Printed in the USA
 ML-00041 Rev. D

