



GETZ HEALTHCARE DENTAL LIMITED

23/F, 8 Commercial Tower, 8 Sun Yip Street,
Chai Wan, Hong Kong SAR, People's Republic of China
香港柴灣新業街 8 號八號商業廣場 23 樓
Tel. : +852 2563 5193
Fax : +852 2565 9537
Email : info.dental.hk@getzhealthcare.com

A NEW DIMENSION BEYOND
YOUR EXPECTATIONS

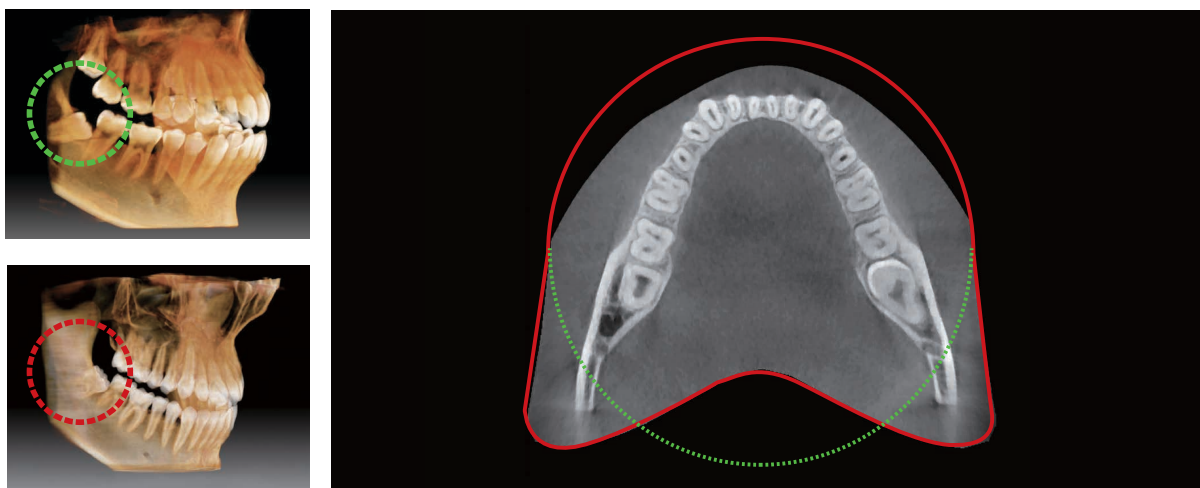
vatech A9™





EXTENDED ARCH-SHAPED FOV

The FOV of the vatech A9 provides an arch-shaped volume, showing a wider view of dentition when compared to other devices with the same FOV. When the tooth is lying on its side, there is a high possibility that the tooth will be cut out of the image. This possibility is eliminated with our "arch-shaped volume" and shows the hidden dentition area.



PRODUCT CONFIGURATION

	CBCT	PANO	CEPH
Vatech A9	•	•	-
Vatech A9 RC	•	•	•

SPECIFICATIONS (vatech A9: PHT-30CSS)

Function		CT + Pano + Ceph
Focal Spot		0.5 mm (IEC 60336)
CT FOV Size		8x8 cm (Anatomical 9.3x8 cm)
Voxel Size		0.2 mm / 0.3 mm
Scan Time	CT	18 sec
	Pano	11.9 sec / 14.1 sec
	Ceph	1.9 sec / 3.9 sec
Gray Scale		14 bit
Tube Voltage		60 ~ 99 kV
Current		4 ~ 10 mA
Weight	Without Ceph unit	92 kg (202.83 lbs. - Without Base)
		130 kg (286.60 lbs. - With Base)
	With Ceph unit	118 kg (260.15 lbs. - Without Base)
		156 kg (343.92 lbs. - With Base)

*The specifications are subject to change without prior notice.

DIMENSIONS (Unit: inch)

