

SPEED, QUALITY, PREDICTABILITY
NO COMPROMISE

Green X 12™

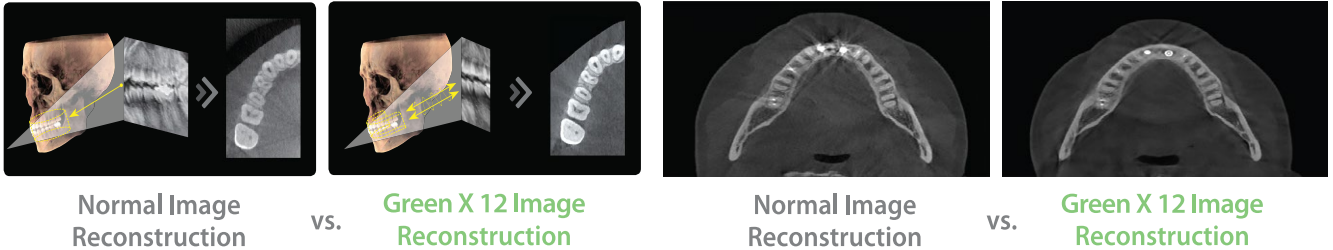


- COMPRESSED SENSING TECHNOLOGY
- HIGHEST RESOLUTION WITH 0.05 mm VOXEL SIZE
- LARGE SINGLE SCAN FOV
- FASTEST SCAN TIME

49.5 μ m
CMOS
Sensor

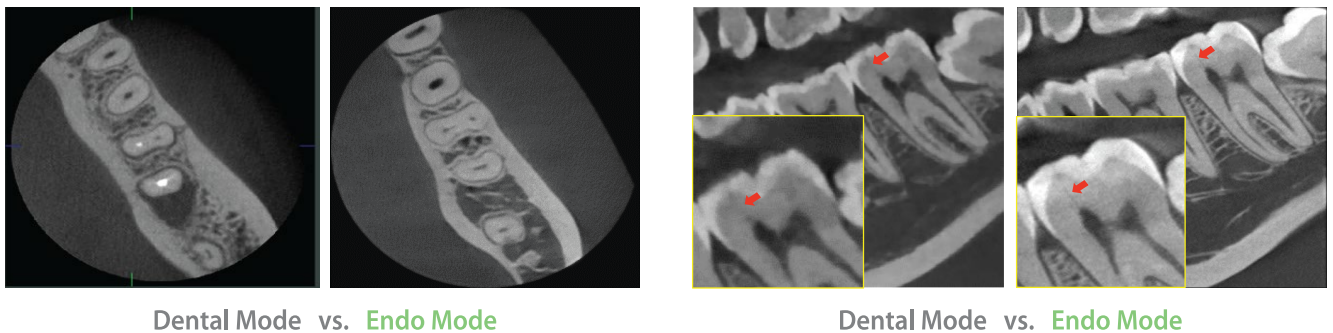
COMPRESSED SENSING TECHNOLOGY

Vatech dramatically improves its image quality with much less artifact and noise via its Compressed Sensing Technology (CST), iterating its reconstruction process 10 times more than the normal amount to depict the object's true representation.



ENDO MODE WITH HIGH RESOLUTION

With its 4cm x 4cm volume mode and 50 micron voxel size, the endo mode will optimize treatment of highly-focused regions of interest. It is ideal for endodontic use because the dentist is able to achieve an extraordinary image in a high-resolution voxel size.



MULTI FOV SELECTION

The Green X 12 offers a range of selectable fields of view. The Multi FOV option allows users to select the optimum FOV mode while minimizing exposure to areas that are not in the region of interest. The selection includes the following FOV sizes for diagnostic needs: 12x14, 12x8.5, 8x8, 8x5, and 4x4. These options cover the full arch region, sinus and left/right TMJ, and suits most oral surgery cases and multiple implant surgeries.

GREEN SCAN TIME

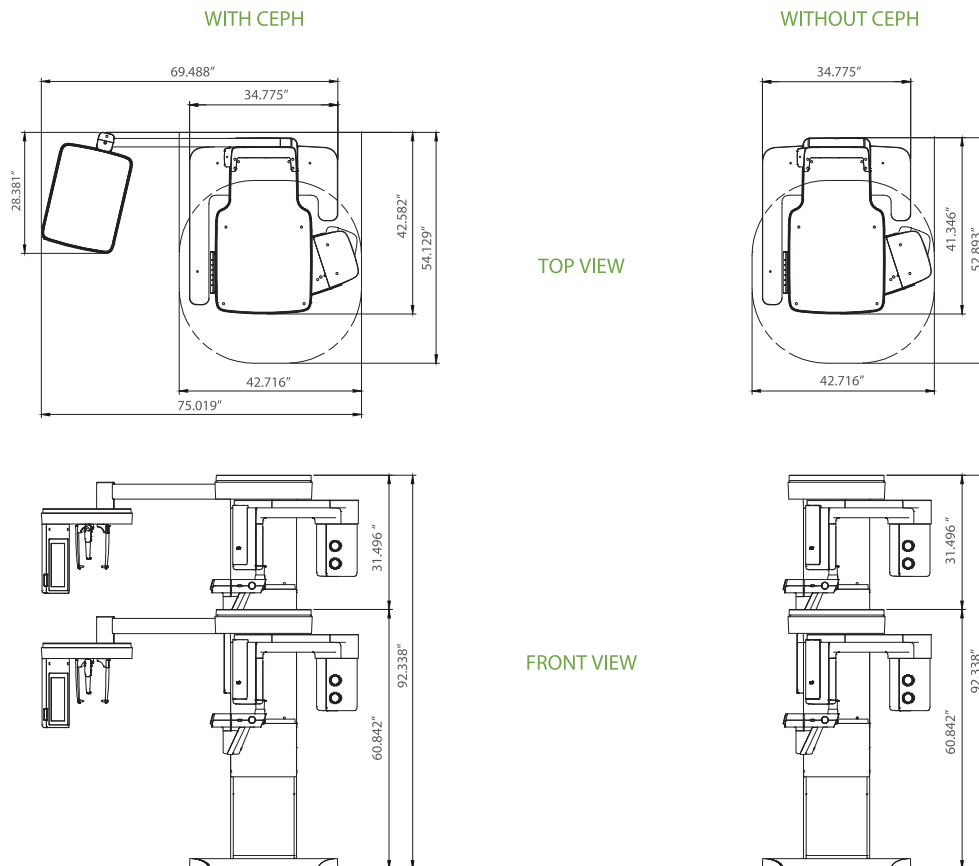
Due to its scan time, the Green X 12 minimizes motion artifact and enables faster workflow. It produces superb diagnostic images, which will be a source of pride for any dental practice. Focusing on the highest quality of patient care, Vatech strives to improve the health and safety of your patients.

SPECIFICATIONS [Green X 12 : PHT-75CHS]

Function	CT + Pano + Ceph + Model Scan	
Focal Spot Size	0.5 mm (IEC 60336)	
CT FOV Size	Endo(4x4), 8x5, 8x8, 12x8.5, Smart Focus, Double Scan(12x14)	
Voxel Size	4x4	0.05 mm
	8x5 / 8x8	0.12 mm / 0.2 mm
	2x8.5 / Double Scan / Smart Focus	0.2 mm / 0.3 mm / 0.07 mm
Scan Time	Pano	7.5 sec / 14.1 sec
	Ceph	1.9 sec / 4.9 sec
	CBCT	10.0 sec (8x5- 8x8) 15.5 sec (12x8.5, Smart Focus, Double Scan) 13.0 sec (Endo)
Gray Scale	14 Bit	
Tube Voltage / Current	60 - 99 kVp / 4 - 16 mA	
Weight	Without CEPH unit	359.13 lbs- without Base
		480.38 lbs- with Base
	With CEPH unit	414.25 lbs- without Base
		535.50 lbs - with Base
Dimensions	With CEPH unit	75.02"(L) x 57.39"(W) x 91.24"(H)- without Base
		75.02"(L) x 57.39"(W) x 92.34"(H)- with Base
	Without CEPH unit	42.72"(L) x 57.39"(W) x 91.24"(H)- without Base
		42.72"(L) x 57.39"(W) x 92.34"(H)- with Base

*The specifications are subject to change without prior notice.

DIMENSIONS [Unit: Inch]



***An additional 3 inches (76.2 mm) of space is required behind the unit for wall mount bracket installation (mandatory unless there is a base mount installation).**